

MATTHEW LIU FINE ARTS

雷纳托·尼科洛迪 Renato Nicolodi



雷纳托·尼科洛迪，1980年生于布鲁塞尔，是一位以雕塑和绘画闻名的比利时艺术家。他的作品致力于唤起一种普世的神性，通过描绘通往封闭通道的走廊和阶梯，巧妙运用光影引导观者注视结构深处不可见的内部空间。尼科洛迪的创作核心保留某种「虚空」，借鉴古代和历史文化中的建筑原型，同时剥离其原有功能、装饰与教条。

尼科洛迪创作的纪念碑、遗迹和神龛同时保有了原创者和观众的记忆与感受。如今的社会以超高的速度运转，一切都遭到质疑：科学，技术，自然，文化，甚至人类在社会中的位置。他的雕塑和绘画对于这个时代的人而言，无疑是一种精神灯塔，是邀请观众进行深思和反省的视觉之锚，是他们通往自我心灵空间的入口。他的作品散发出的神圣感并不是来自基本神学、精神或哲学意识形态。是通过看似宗教建筑原型和作品名称而从某种世界观出发，同时不提出具体的诠释，这样的留白是为让观者平静而自由地反思。视觉艺术、建筑和文学数百年的故事和历史，在尼科洛迪的作品中都成为思考过去、现在或未来可能性的媒介。

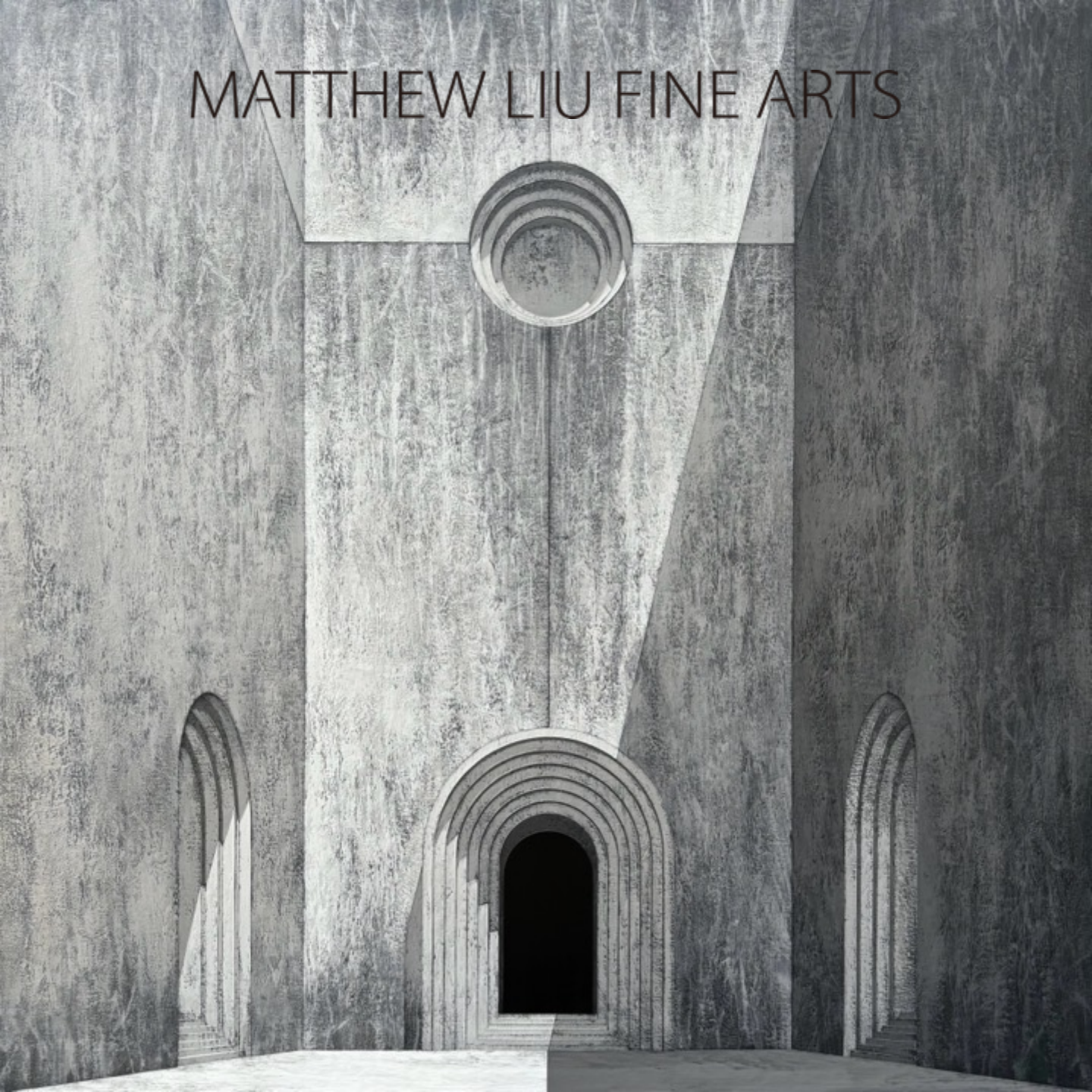
他的作品已被多家重要机构收藏，包括旧金山现代艺术博物馆（SFMoMA）、上海外滩美术馆（Rockbund Art Museum）、比利时Felix艺术博物馆（FelixArt Museum）、比利时弗兰德斯创意区（Flanders District of Creativity）、根克市（City of Genk）、洛克伦市（City of Lokeren）以及东弗兰德省（Province of East Flanders）等。这些收藏不仅体现了尼科洛迪作品的艺术价值，也凸显了其跨越地域和文化界限的普世意义。此外，尼科洛迪还在比利时、荷兰等多个城市完成了大量公共艺术项目，进一步扩大了他的艺术影响力，

Renato Nicolodi (Brussels, 1980) is a renowned Belgian artist whose sculptures and paintings evoke universal sacrality. His work imagines spaces with corridors and stairs leading to closed-off passageways, using light and shade to draw the spectator's gaze to invisible interiors. Nicolodi's creations preserve a core "emptiness," referencing archetypal buildings while stripping them of original function, ornament, and dogma.

In a rapidly changing society where everything is questioned, Nicolodi's art serves as a spiritual beacon. His monuments, relics, and shrines conserve both creator and spectator memories, inviting reflection and exploration of one's mental space. The sacrality in his work stems not from specific ideologies but from architectural archetypes and titles that evoke a worldview without explicit interpretation. This ambiguity allows for free contemplation, with centuries of art, architectural, and literary history becoming mediums for pondering past, present, and future.

Nicolodi's work has been collected by major institutions worldwide, including San Francisco MoMA, Rockbund Art Museum (Shanghai), and various Belgian institutions. These collections reflect both the artistic value and universal significance of his work. Furthermore, his numerous public art projects in Belgium, the Netherlands, and beyond have expanded his influence, engaging broader audiences and stimulating reflection on the relationship between art and space.

MATTHEW LIU FINE ARTS



雷纳托·尼科洛迪 Renato Nicolodi

视觉闭合 I *OCULUS CLAUSUS I*

布面丙烯 Acrylic on canvas

140 x 140 x 3.5 cm

2024

MATTHEW LIU FINE ARTS



雷纳托·尼科洛迪 Renato Nicolodi
六边形神庙 I AEDES HEXAGONA I

布面丙烯 Acrylic on canvas

140 x 140 x 3.5 cm

2024

MATTHEW LIU FINE ARTS



雷纳托·尼科洛迪 Renato Nicolodi

矩形神庙 *IAEDES QUADRATA I*

布面丙烯 Acrylic on canvas

203 x 203 x 3.5 cm

2024

MATTHEW LIU FINE ARTS



雷纳托·尼科洛迪 Renato Nicolodi

椭圆形神庙 I *AEDES OVALIS I*

布面丙烯 Acrylic on canvas

203 x 203 x 3.5 cm

2024

MATTHEW LIU FINE ARTS



雷纳托·尼科洛迪 Renato Nicolodi
对称圣堂 II PORTICUS IN ANTIS II

布面丙烯 Acrylic on canvas

175 x 175 x 3.5 cm

2024

MATTHEW LIU FINE ARTS



雷纳托·尼科洛迪 Renato Nicolodi
对称圣堂 III PORTICUS IN ANTIS III
布面丙烯 Acrylic on canvas
175 x 175 x 3.5 cm
2024



OLDER®

MATTHEW LIU FINE ARTS



雷纳托·尼科洛迪 Renato Nicolodi

神庙 III AEDES III

混凝土与纸 Concrete and paper

42 x 28 x 28 cm

版数 Edition 1/5+2AP

2024



MATTHEW LIU FINE ARTS



雷纳托·尼科洛迪 Renato Nicolodi

堡垒内部 I ARX INTERIORIS I

混凝土与纸 Concrete and paper

41 x 28 x 28 cm

版数 Edition 1/5+2AP

2024



MATTHEW LIU FINE ARTS



雷纳托·尼科洛迪 Renato Nicolodi

通道 I TRANSITUS I

混凝土与纸 Concrete and paper

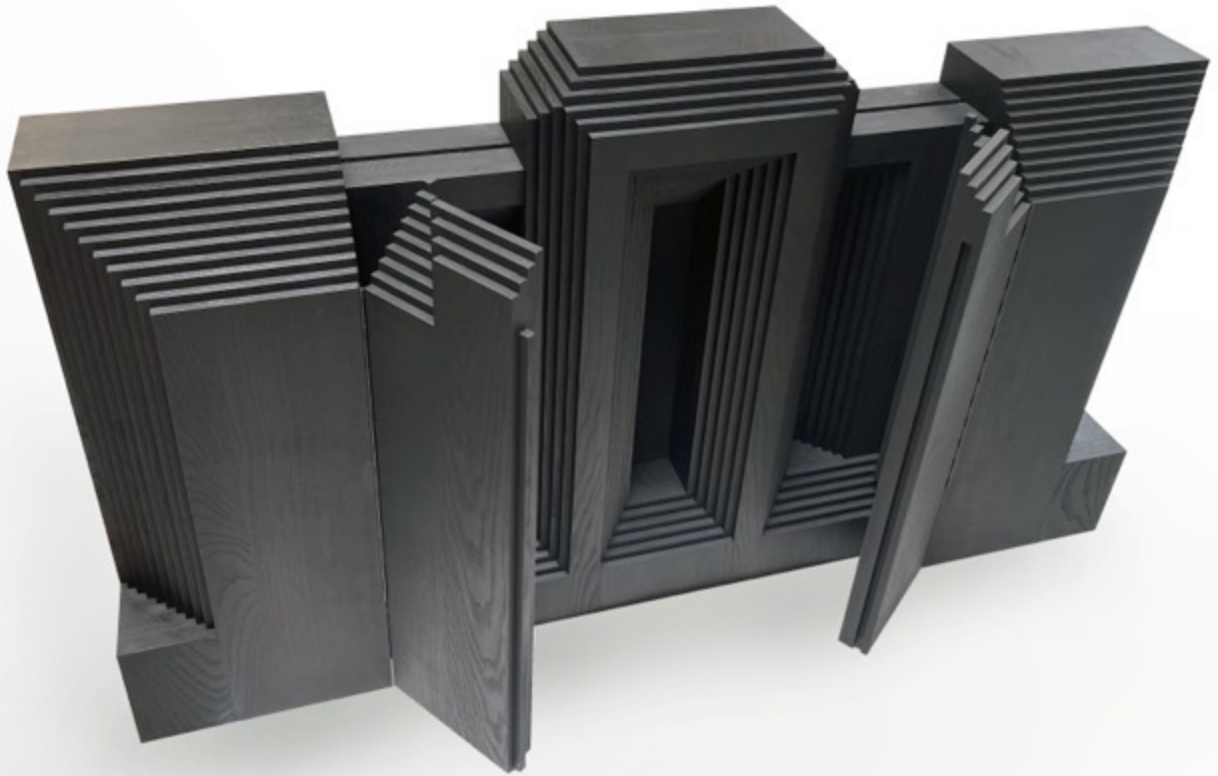
42 x 28 x 28 cm

版数 Edition 1/5+2AP

2024



MATTHEW LIU FINE ARTS



雷纳托·尼科洛迪 Renato Nicolodi

祭坛 II *RETABLE II*

热处理栲木、纸综合材料 Thermo-treated ash wood and paper

80.3 x 101.2 x 23.1 cm

版数 Edition 1/3+2AP

2024



MATTHEW LIU FINE ARTS



雷纳托·尼科洛迪 Renato Nicolodi

神龕 I SACRACRIUM I

热处理栲木、纸综合材料 Thermo-treated ash wood and paper

59.5 x 44.8 x 14 cm

版数 Edition 1/5+2AP

2024



MATTHEW LIU FINE ARTS



雷纳托·尼科洛迪 Renato Nicolodi

神龛 II SACRACRIUM II

热处理栲木、纸综合材料 Thermo-treated ash wood and paper

58.8 x 42 x 12.6 cm

版数 Edition 1/5+2AP

2024



MATTHEW LIU FINE ARTS



雷纳托·尼科洛迪 Renato Nicolodi

神龛 III SACRACRIUM III

热处理栲木、纸综合材料 Thermo-treated ash wood and paper

56.7 x 40.6 x 16.8 cm

版数 Edition 1/5+2AP

2024

