

2024.3.2

4.7

Char and Starry Sky
岩鱼的星空



原良介 Ryosuke Hara

拾萬空间(北京)一楼展厅 | Exhibition Hall on the First Floor of Hunsand Space(Beijing)

拾萬 | 北京市朝阳区798艺术区798西街02号

Hunsand Space | D02, 798 West Street, 798 Art District
010-57623059 | info@hunsand.com | www.hunsand.com

拾萬空间（北京）非常荣幸地将于2024年3月2日，在画廊一楼项目空间呈现日本艺术家原良介的个展《岩鱼的星空》。展览名称源自本次展出的同名陶瓷及绘画作品，上面均绘有三条岩鱼。在原良介的创作中，物象经常以三个的量数出现，代表了他对过去、现在、未来三种时态相互依存、影响的指涉和认知。

出生于日本神奈川县的原良介，从小的居住环境毗邻山涧、溪流，在溪水中抓鱼是他儿时重要的娱乐。这里的岩鱼胆小谨慎，通常躲在石头后面，只在夜里没人时才偷偷露出来望着星空。而鳟鱼则行动敏捷，自古就被日本人喜爱，被誉为“溪流的女王”。这些儿时的玩耍记忆一直影响着原良介的创作，并在他的笔下展现出灵动、自在的天性。

几年前，原良介在滋贺县的美秀美术馆看到了日本名僧明惠上人的一件素描作品，瞬间就被其吸引。明惠上人以每晚记录梦境的《梦记》而闻名，但这样的带插图的作品却极为罕见。素描中的水瓶据说代表着观音或弥勒菩萨，而为了探寻瓶中流出的白光究竟代表什么，原良介接连创作了“明惠的白光”系列。画中的白光部分，他没有使用颜料，而是通过削去现成的画布，让本应不存在的地方显现出它的存在；而水瓶的主题，他则选择了小鹿田和苗代川等地民窑烧制的古老壶来进行呈现。这些土地的素材和为当地生活烧制的朴素陶器，同样构成了日本自然与风土的一部分，并成为他重新思考日本人的自然观和艺术观的契机。

明惠上人于1206年在京都嵯尾山开设了高山寺，他一生的大部分时间都在山中度过，并以僧侣的身份在大自然中丰富而严酷地生活。高山寺内收藏着《鸟兽戏画》《树座禅像》等日本国宝级的艺术品，以及神鹿的木雕和运庆的犬木雕等动物雕刻的名作，这些作品更是完美体现了日本的自然观、宗教观和艺术观。于是，种种机缘之下，原良介的个人记忆便与历史的经验重叠在一起，最终化身在他创作中的日月星空、游鱼草木这些日常的细小里；而人就若隐若现于这自然之中，并与它们一起，在彼世、现世和来世之间不断地循环。

Hunsand (Beijing) is honored to present Japanese artist Ryosuke Hara's solo exhibition "Char and Starry Sky" in the gallery's first-floor project space on March 2, 2024. The exhibition title originates from the ceramic and painting works displayed, all depicting three Char fish. In Ryosuke Hara's artworks, objects often appear in sets of three, symbolizing his interdependent and cognitive reference to the past, present, and future.

Born in Kanagawa, Japan, Ryosuke Hara grew up in an environment close to mountain streams and rivers, where catching fish in the streams was his childhood pastime. The char here are timid and usually hide behind rocks, only peeking out at the starry sky when no one is around at night. On the other hand, the trout is agile and has been beloved by the Japanese since ancient times, revered as the "queen of the streams." These childhood memories continue to influence Ryosuke Hara's creations, reflecting the playful and free-spirited nature in his works.

Several years ago, Ryosuke Hara was captivated by a drawing by the renowned Japanese monk Myoe Shonin at the Miho Museum in Shiga. Myoe Shonin was famous for his nightly recordings of dreams in "Dream Records," but such illustrated works were extremely rare. The water bottle in the drawing is said to represent Kannon or Maitreya Bodhisattva, and to explore what the white light flowing out of the bottle symbolized, Ryosuke Hara created the "White Light of Myoe" series in succession. In the white light part of the painting, he did not use pigments but rather removed the existing canvas to reveal its presence in places where it should not exist. For the theme of the water bottle, he chose ancient pots fired in local kilns such as Ontayaki and Naeshirogawa to present. These materials from the land and the simple pottery fired for local life are also part of Japan's nature and climate, providing him with an opportunity to rethink the Japanese perception of nature and art.

Myoe Shonin established Kosho-ji Temple on Mt. Takao in Kyoto in 1206, where he spent most of his life in the mountains, living a rich and rigorous life in nature as a monk. Kosho-ji Temple houses national treasures such as "Birds and Animals at Play" and "Tree-Seated Meditation Images," as well as masterpieces of animal carvings such as divine deer and Eukyong. These works perfectly embody Japan's views on nature, religion, and art. Thus, under various circumstances, Ryosuke Hara's personal memories overlap with historical experiences, ultimately incarnating in his creations of the daily minutiae of the sun, moon, and stars, and the swimming fish and plants; while people are elusive among nature, cycling with them between this world, the present world, and the afterlife.



岩魚と星空 | Char and Starry Sky

布面油画 | Oil on Canvas

41 × 31.8cm

2024



鱒子| Trout Girl

布面油画 | Oil on Canvas

51 × 66cm

2023



裏山の佳器 | My Beautiful Pottery

布面油画 | Oil on Canvas

41 × 31.8cm

2021



明惠的白光二 | Myoe's White Light II

布面油画 | Oil on Canvas

53×41cm

2020



明惠的白光一 | Myoe' s White Light I

布面油画 | Oil on Canvas

41 × 31.8cm

2019

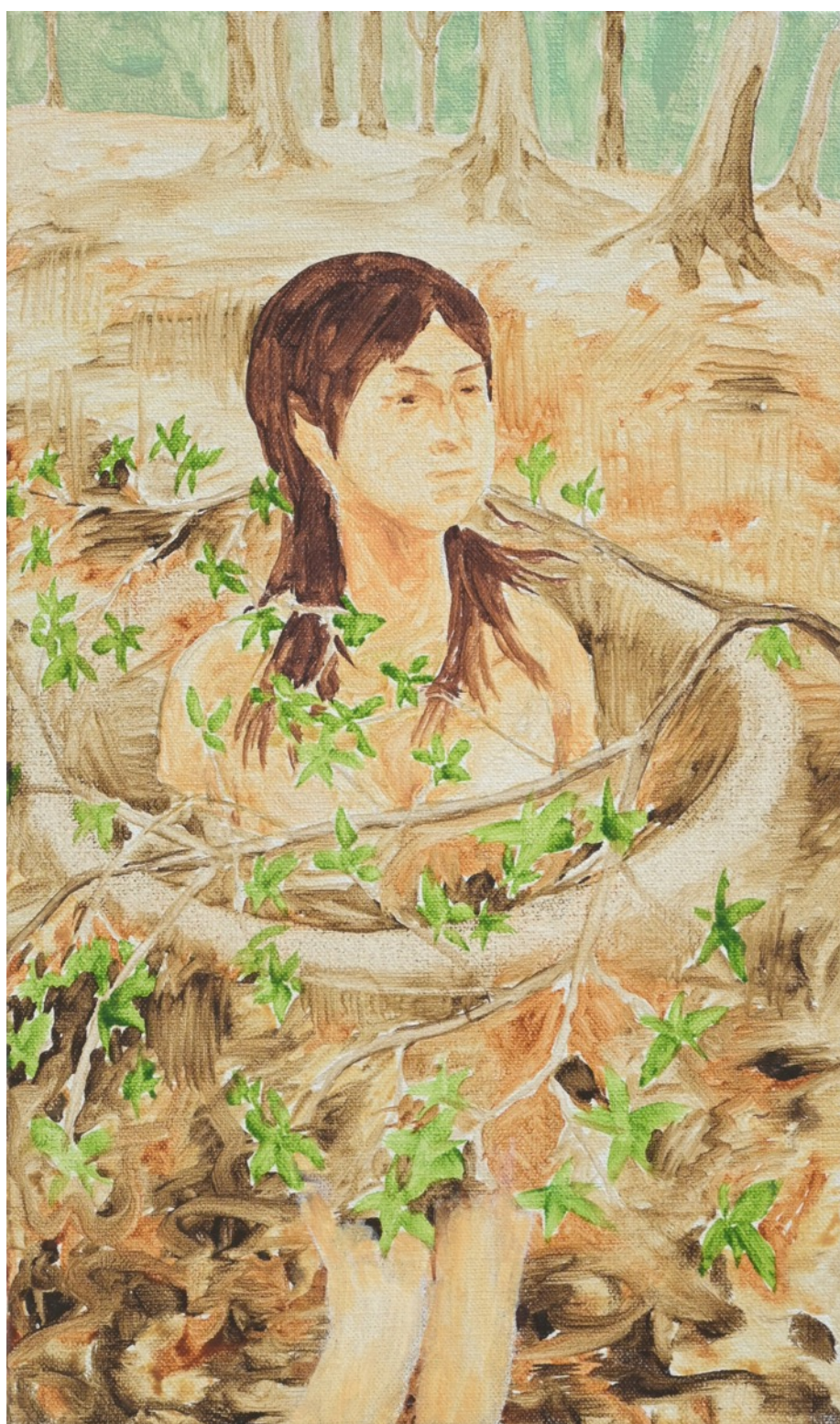


ぬけ | Nuke

布面油画 | Oil on Canvas

65.2×50cm

2012



事象の地平面 | Event Horizon

布面油画 | Oil on Canvas

41 × 24.2cm

2008

Ryosuke Hara 原良介

拾 萬
北京/石家庄/杭州
HUNSAID CENTER
FOR CONTEMPORARY ART
拾萬当代艺术中心



岩魚と星空 | Char and Starry Sky

釉上彩瓷器 | Porcelain Overglaze

13×11×18.3cm

独版 | Unique Edition

2024



Ryosuke Hara 原良介

拾 萬
北京/石家庄/杭州
HUNSAID CENTER
FOR CONTEMPORARY ART
拾萬当代艺术中心



鱒子 | Trout Girl

釉上彩瓷器 | Porcelain Overglaze

17.5×16×4.5cm

独版 | Unique Edition

2024



Ryosuke Hara 原良介

拾 萬
北京/石家庄/杭州
HUNSIAND CENTER
FOR CONTEMPORARY ART
拾萬当代艺术中心



月 | Moon

釉上彩瓷器 | Porcelain Overglaze

13.5×13.5×12.5cm

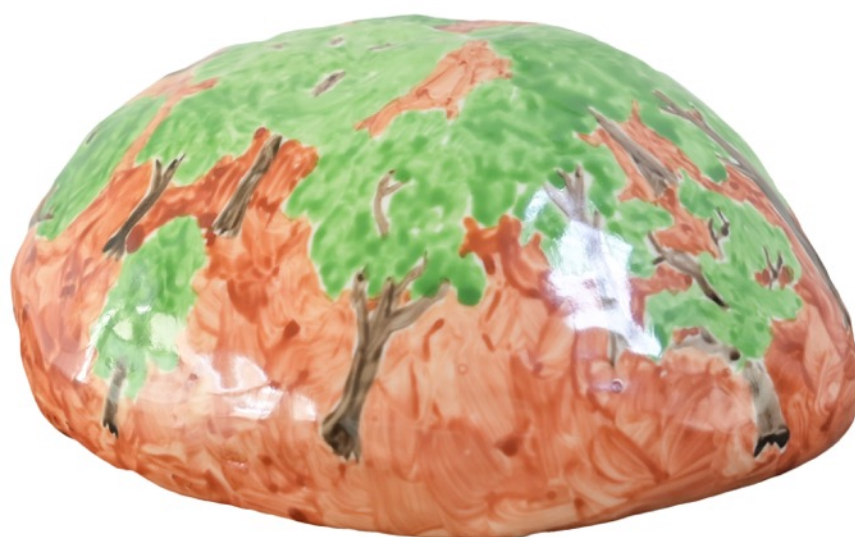
独版 | Unique Edition

2024



Ryosuke Hara 原良介

拾 萬
北京/石家庄/杭州
HUNSAID CENTER
FOR CONTEMPORARY ART
拾萬当代艺术中心



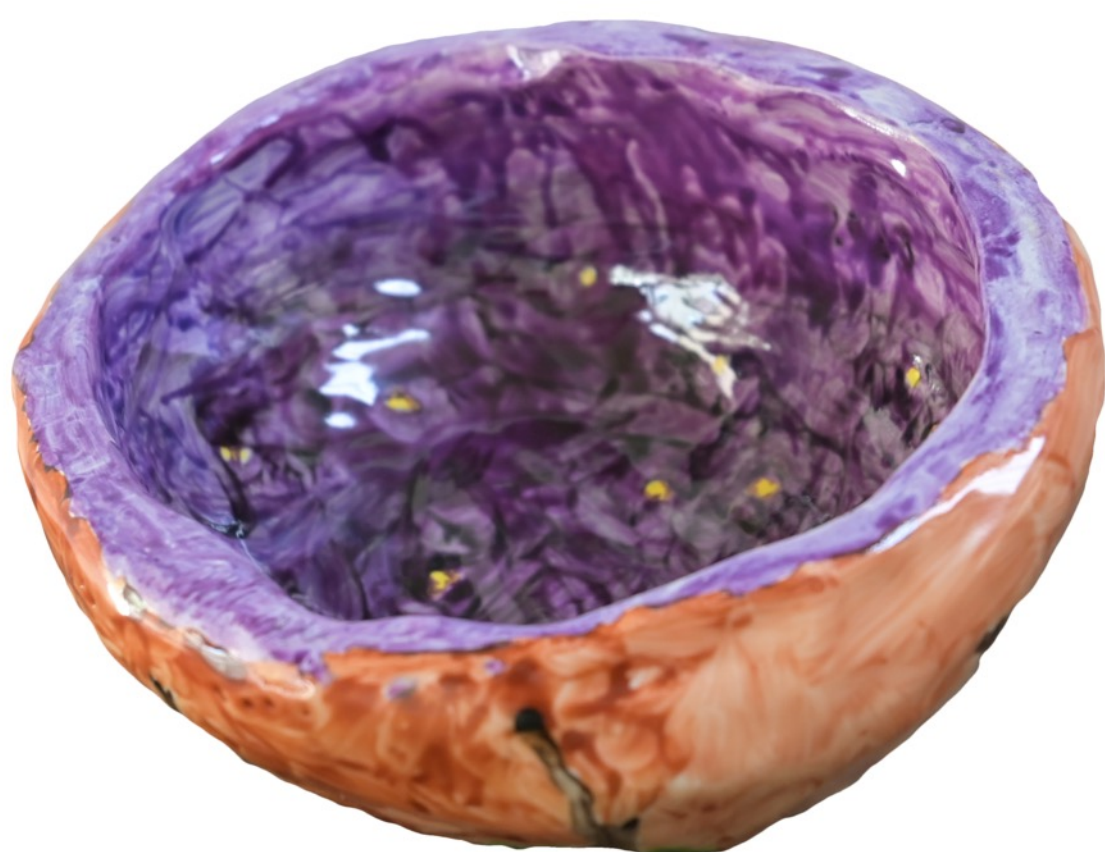
星空 | Starry Sky

釉上彩瓷器 | Porcelain Overglaze

20.5×17×8.8cm

独版 | Unique Edition

2024



Ryosuke Hara 原良介

拾 萬
北京/石家庄/杭州
HUNSAID CENTER
FOR CONTEMPORARY ART
拾萬当代艺术中心



木の間 | Green of the Forest

釉上彩瓷器 | Porcelain Overglaze

25 × 12.5 × 4.6cm

独版 | Unique Edition

2024



原良介

1975年出生于神奈川县，2002年毕业于多摩美术大学美术学部，现居日本东京。

个展

- 2023“心象图表”second2 东京
- 2021“后山的魅力”un petit GARAGE东京
- 2020《明惠的白光》second2 东京
- 2017“色相上”圆觉寺 镰仓
- 2014“天然”格尔奥尔塔纳 东京
- 2012 茅崎市美术馆 神奈川
- 2011“原良介”Yuka Sasahara Gallery 东京
- 2009 “project N36原良介”东京歌剧城艺术画廊 东京
- 2008 “摇曳地平面”Yuka Sasahara Gallery 东京
- 2007 “By a forest”Gallery Stump Kamakura 神奈川
- 2006 “sprout drawing”Yuka Sasahara Gallery 东京
- 2005 “原良介展”空间画廊 大阪
- 2002 “原良介展”东京仙境本乡 东京

群展

- 2023 白石町妻山神社 佐贺
- 2022“捉迷藏。然后，”茅崎市美术馆 神奈川
- 2021“气韵生动”明治神宫宝物殿 东京
- 2020“札幌国际艺术节2020”（中止举办，仅存档）北海道
- 2019 原良介·平川恒太「森林的入口」un petit GARAGE 东京
“通往美术馆的路”茅崎美术馆 神奈川
- 2018“画家的陶瓷”Atelier（松井绘里菜工作室） 东京
- 2015“围绕陶的小组展”GALLERY SIDE2 东京
“收藏家和艺术家vol.1”寺田仓库T-Art Gallery 东京
- 2011“未视感汉明”格尔奥尔塔纳 东京
- 2010 3331 Arts Chiyoda盛大开业纪念展‘3331 Presents TOKYO:Part1’3331 ArtsChiyoda 1楼画廊 东京
- 2007 东京画-小小的我的尼奇乔的胡凯
- 2006“百花缭乱”声音计划 神奈川
- 2004“东京设计师周2004”台场集装箱运动场 东京
东京都现代美术馆 东京
- 2002“日本·韩国的绘画表现－新一代作家的现在”新宿普罗姆纳德画廊 东京

Ryosuke Hara

He born in Kanagawa, Japan by 1975. He graduated from Tama Art University, MFA in 2002. Now he lives in Tokyo.

Solo Exhibitions

- 2023 "Mental image chart" second 2, Tokyo
- 2021 "Cubism on backyard" un petit GARAGE, Tokyo
- 2020 "Myoe's white light" second 2, Tokyo
- 2017 "on a color" Engakuji Temple, Kamakura
- 2014 "Tennen" Gellalterna, Tokyo
- 2012 "Ryosuke Hara -path to the painting- " Chigasaki City Museum of Art, Kanagawa
- 2011 "Ryosuke Hara" Yuka Sasahara Gallery, Tokyo
- 2009 "project N 36 Ryosuke Hara" Tokyo Opera City Art Gallery, Tokyo
- 2008 "Flickering Horizon" Yuka Sasahara Gallery, Tokyo
- 2007 "By a Forest" Gallery Stump Kamakura, Kanagawa
- 2006 "Sprout Drawing" Yuka Sasahara Gallery, Tokyo
- 2005 "Ryosuke Hara" SPACE GALLERY, Osaka
- 2002 "Ryosuke Hara" TOKYO WONDER SITE HONGO, Tokyo

Group Exhibitions

- 2023 "SHIROISHI ART FIELD", Tsumayama Shrine Saga
- 2021 "Kiinseido" Meiji Jingu, Tokyo
- 2020 "Sapporo International Art Festival 2020", Hokkaido
- 2019 Ryosuke Hara and Kota Hirakawa "Forest at the entrance" un petit GARAGE, Tokyo
"The Way to [and From] the Museum" Chigasaki City Museum of Art, Kanagawa
- 2018 "Ceramics of Painter" Atelier (Erina Matsui's studio) , Tokyo
- 2015 "About Ceramics" GALLERY SIDE 2, Tokyo
- 2015 "Collector and Artist vol.1" Warehouse TERRADA T-Art Gallery, Tokyo
- 2011 "Mishikan Haming" Gellalterna, Tokyo
- 2010 "3331ArtsChiyoda Grand Opening Exhibition '3331 Presents TOKYO: Part1'"
3331ArtsChiyoda 1st Floor Exhibition Space, Tokyo
- 2007 "Tokyo Painting : My Little Everyday Sceneries" TOKYO WONDER SITE SHIBUYA, Tokyo
- 2006 "Hyakkaryoran" BOICE PLANNING, Kanagawa
- 2004 "TOKYO DESIGNERS WEEK 2004" Container Ground Daiba, Tokyo
"Artists of Tokyo Wonder Wall 2000-2003" Museum of Contemporary Art Tokyo, Tokyo
- 2002 "Contemporary Paintings of Japanese and Korean Artists Today" Shinjuku Promenade Gallery, Tokyo



岩魚と星空 | Char and Starry Sky

布面油画 | Oil on Canvas

41 × 31.8cm

2024



鱒子 | Trout Girl

布面油画 | Oil on Canvas

51 × 66cm

2023



裏山の佳器 | My Beautiful Pottery

布面油画 | Oil on Canvas

41 × 31.8cm

2021



明惠的白光二 | Myoe's White Light II

布面油画 | Oil on Canvas

53 × 41cm

2020



明惠的白光一 | Myoe's White Light I

布面油画 | Oil on Canvas

41 × 31.8cm

2019



ぬけ | Nuke

布面油画 | Oil on Canvas

65.2 × 50cm

2012



事象の地平面 | Event Horizon

布面油画 | Oil on Canvas

41×24.2cm

2008



岩魚と星空 | Char and Starry Sky

釉上彩瓷器 | Porcelain Overglaze

13×11×18.3cm

独版 | Unique Edition

2024



鱒子 | Trout Girl

釉上彩瓷器 | Porcelain Overglaze

17.5×16×4.5cm

独版 | Unique Edition

2024



月 | Moon

釉上彩瓷器 | Porcelain Overglaze

13.5×13.5×12.5cm

独版 | Unique Edition

2024



星空 | Starry Sky

釉上彩瓷器 | Porcelain Overglaze

20.5×17×8.8cm

独版 | Unique Edition

2024



木の間 | Green of the Forest

釉上彩瓷器 | Porcelain Overglaze

25×12.5×4.6cm

独版 | Unique Edition

2024

拾萬空间 | 北京

Hunsand Space | Beijing

北京市朝阳区798艺术区798西街02号

D-02, 798 West Street, 798 Art District, Chaoyang District, Beijing

拾萬当代艺术中心 | 石家庄

Hunsand Contemporary Center | Shijiazhuang

河北省石家庄市桥西区裕华西路15号万象天成F2

2F, Vientiane Tiancheng Shopping Center, No. 15, Yuhua West Road, Qiaoxi District,

Shijiazhuang City, Hebei Province

拾萬空间 | 杭州

Hunsand Space | Hangzhou

杭州市西湖区转塘街道长埭村孵鸡湾公交站 拾萬空间

Bus Stop of Fu Ji Wan, Chang Dai Cun, Zhuan Tang Street, Xihu District, Hangzhou

北京 | Beijing

T: 010-57623059

石家庄 | Shijiazhuang

T: 0311-66600320

杭州 | Hangzhou

T: 0571-81950130

E: hunsand@hunsand.com

W: www.hunsand.com