

不可预测

知

UNPREDICTABLE

FACE

程亮

CHENG LIANG

策展人：李云帆

Curator: Li Yunfan

学术支持：雷鸣

Academic Support: Lei Ming

2024.11.6-12.25

上海市普陀区莫干山50号20号楼101室

Room 101, Building 20, No. 50 Moganshan Road, Putuo District

BB BIRD
GALLERY
珀德画廊

不可预知的面孔

珀德画廊荣幸宣布于 2024 年 11 月 6 日在珀德画廊上海空间推出代理艺术家程亮的最新个展“不可预知的面孔”。此次展览程亮延续了自己高识别度的绘画风格，呈现他对速度背景下人的身体与处境的思考。展览由李云帆策展，并邀请评论人雷鸣为新作撰写评论。

程亮阐述的速度并不局限于时空概念，更包含了技术加速、效率至上、感官加速等速度相关现象对人的异化与重塑的讨论。他试图展现在不断加速的社会中，人的存在状态，即人内在更复杂、不确定，却更真实的那部分被逐渐隐匿于后。

程亮通过一种符码化的速度图像揭示了我们当下生活的世界，激发人们通过画布上的视觉体验重新审视观看自己和所在的时代，用作品中虚幻无所指的部分，提供了更多诠释和想象的可能性。在他的作品中，对速度的感知不断拉扯着现实，变成一种更重要的存在，成为绘画和可视世界之间的桥梁，这种视觉的纯粹性融合承载了他感性而克制的情绪，画面呈现出一种错位与融合的视知觉。

Unpredictable Face

Bird Gallery is honored to announce the opening of its represented artist Cheng Liang's latest solo exhibition "Unpredictable Face" on November 6, 2024, at the gallery space in Shanghai. In this exhibition, Cheng continues his highly distinctive painting style, presenting his thoughts on the human body and conditions against the backdrop of speed. The exhibition is curated by Li Yunfan and critic Lei Ming is invited to write about his new works.

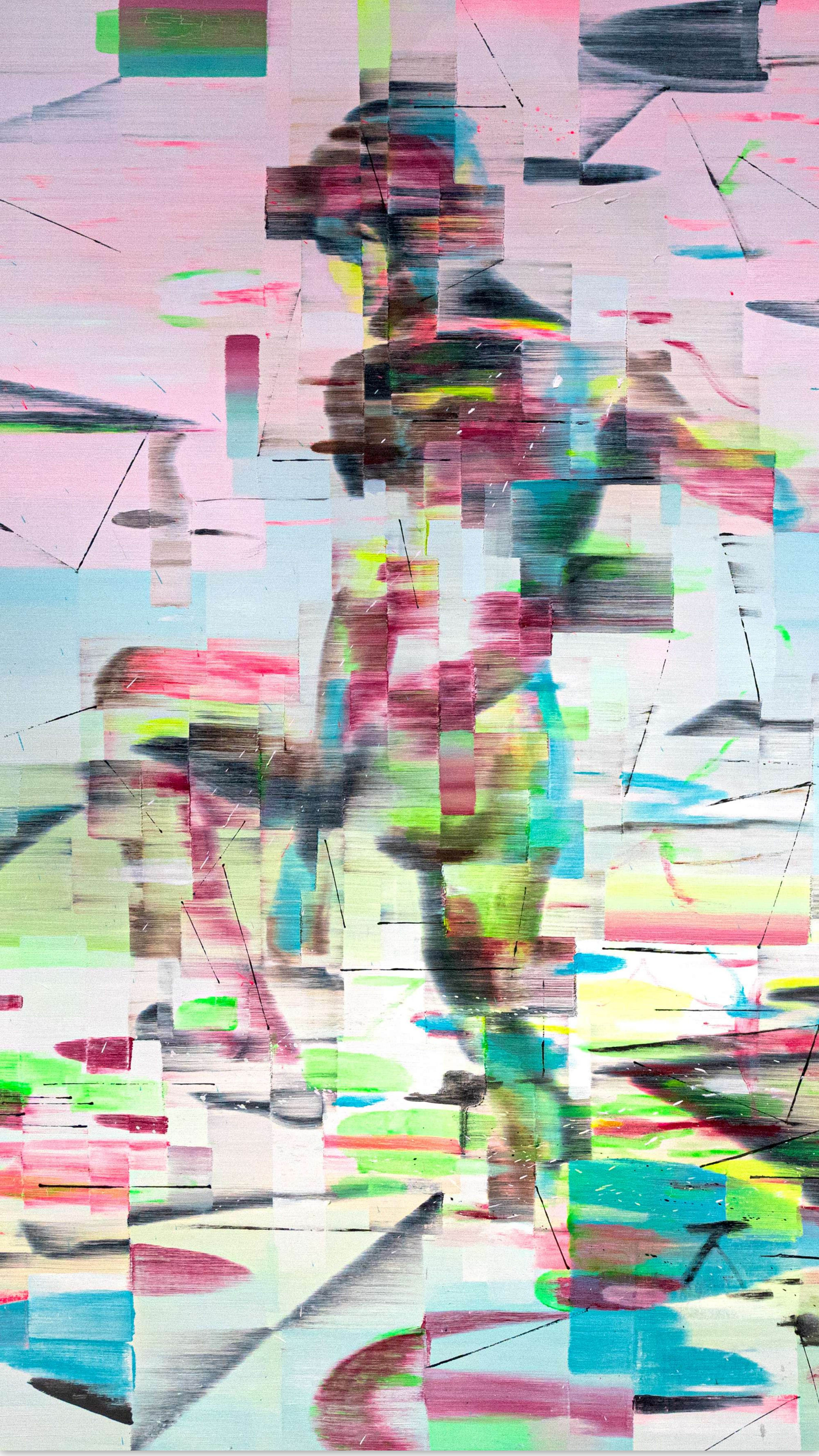
Cheng Liang's exploration of speed extends beyond spatial-temporal concepts to encompass discussions of how technological acceleration, efficiency supremacy, and sensory acceleration alienate and reshape humanity. He attempts to reveal how, in an increasingly accelerated society, the more complex, uncertain, yet authentic aspects of human existence gradually recede into the hidden side.

Through a coded imagery of speed, Cheng reveals the world we currently inhabit, inspiring viewers to reexamine themselves and their era through the visual experience on canvas. The ambiguous, non-referential elements in his works open up possibilities for broader interpretation and imagination. In his paintings, the perception of speed constantly pulls at reality, evolving into a more significant presence that bridges painting and the visible world. This visual purity merges with his sensitive yet restrained emotions, resulting in a perceptual experience that simultaneously displays both displacement and integration.



踏入沼泽
Step into the Swamp

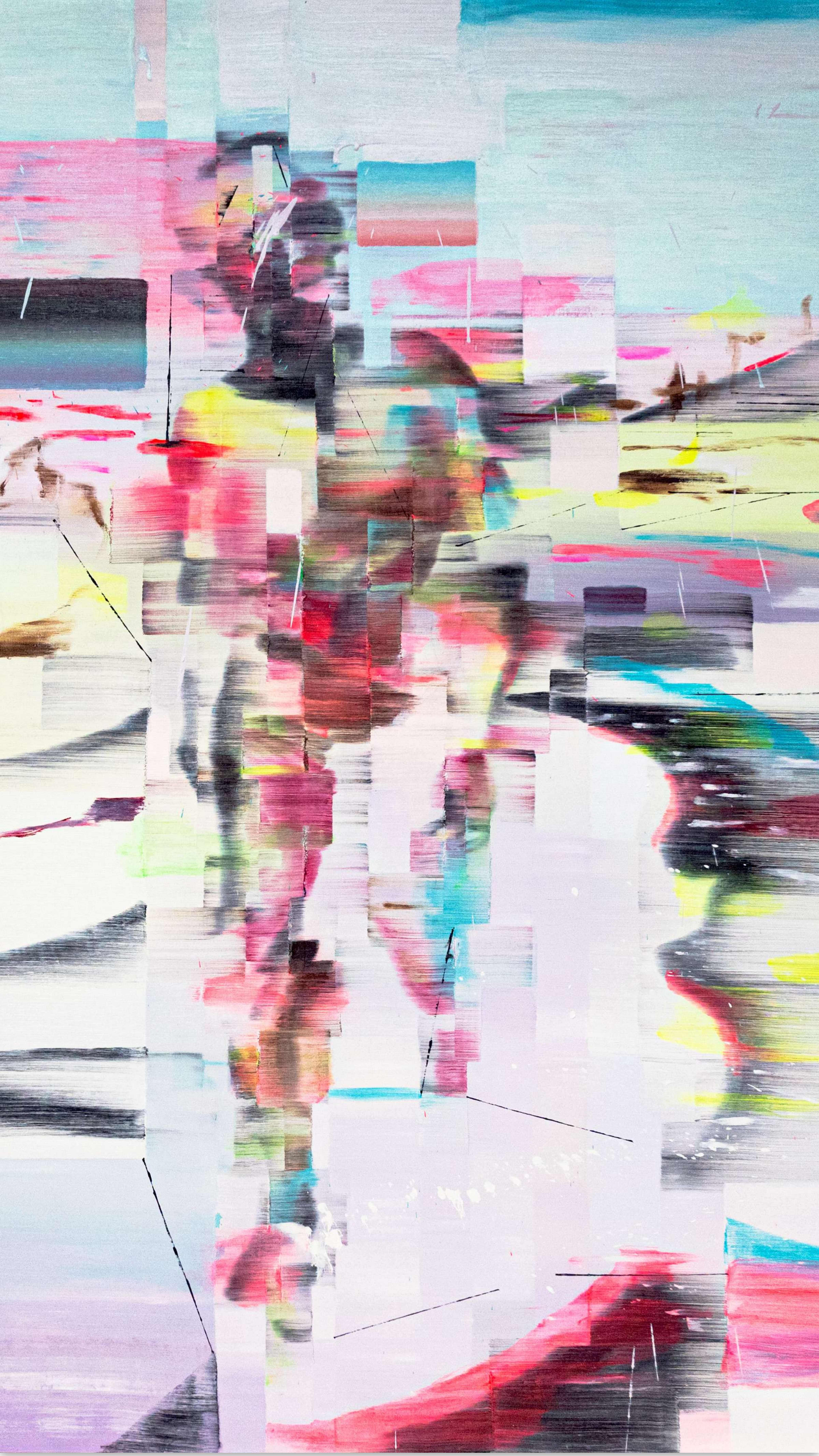
2024
布面油画
Oil on Canvas
180(h) × 180 cm





莫名行走
Inexplicable Walk

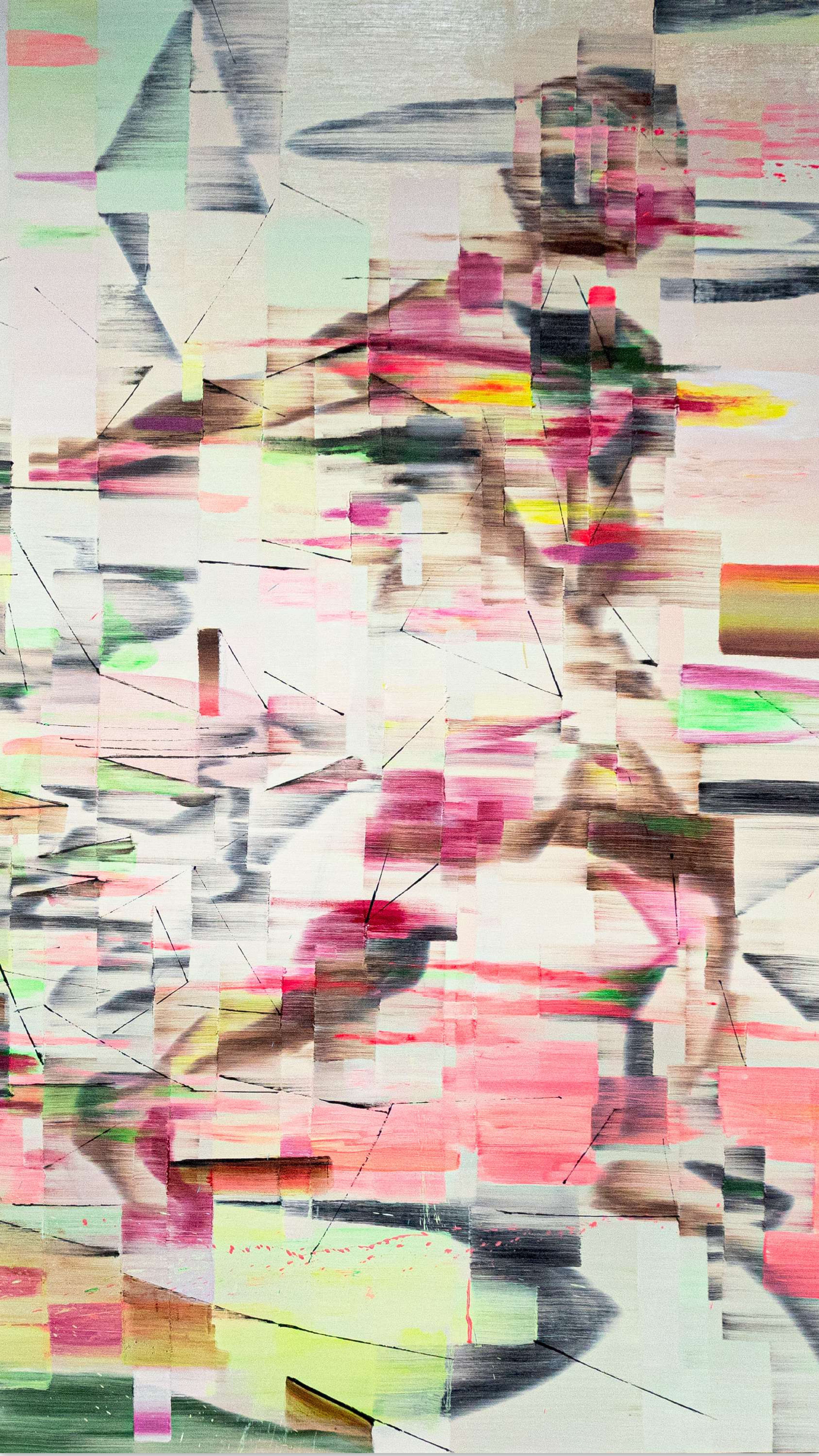
2024
布面油画
Oil on Canvas
180(h) × 180 cm

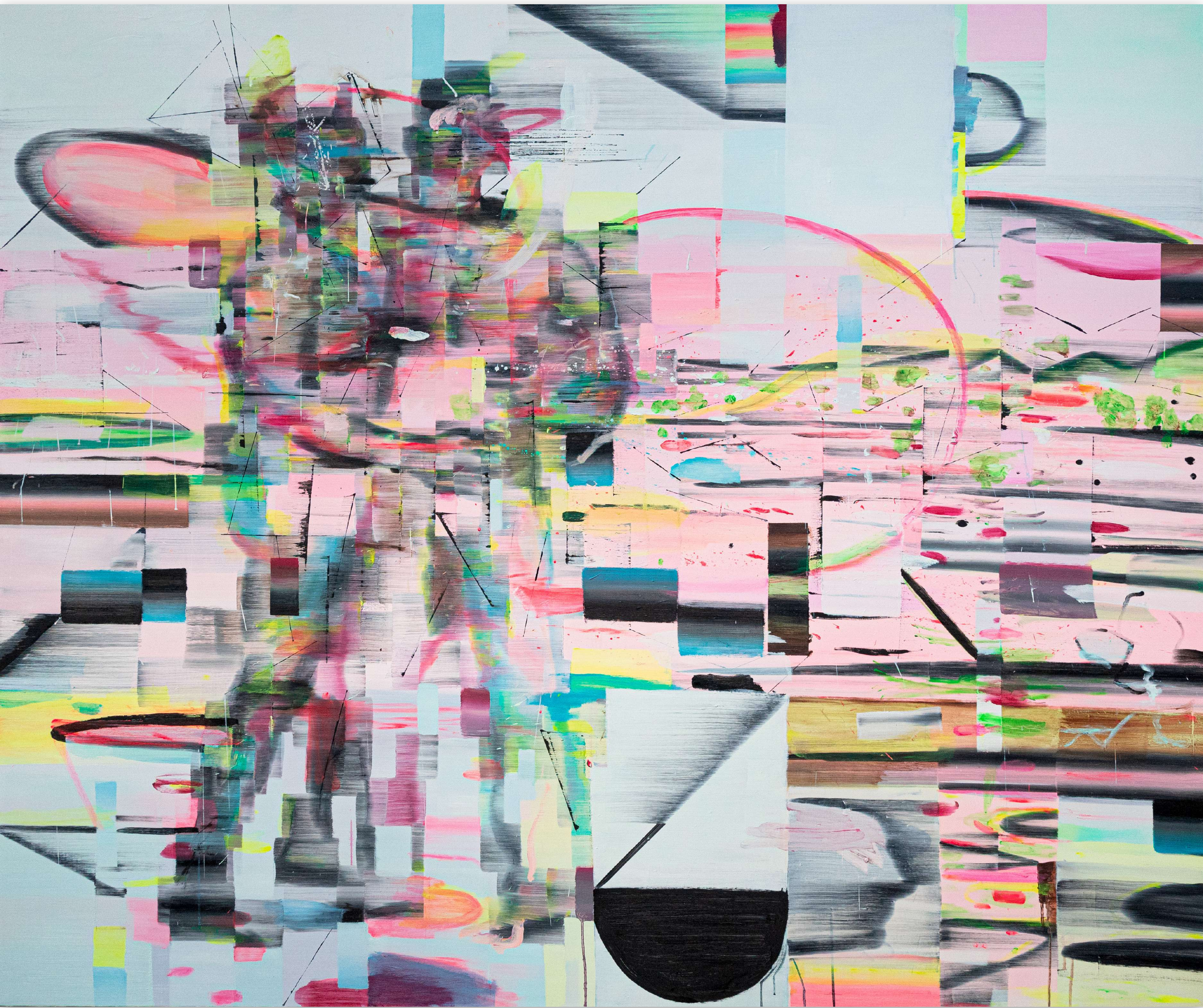




身后悬浮物
Floaters Behind

2024
布面油画
Oil on Canvas
180(h) × 180 cm

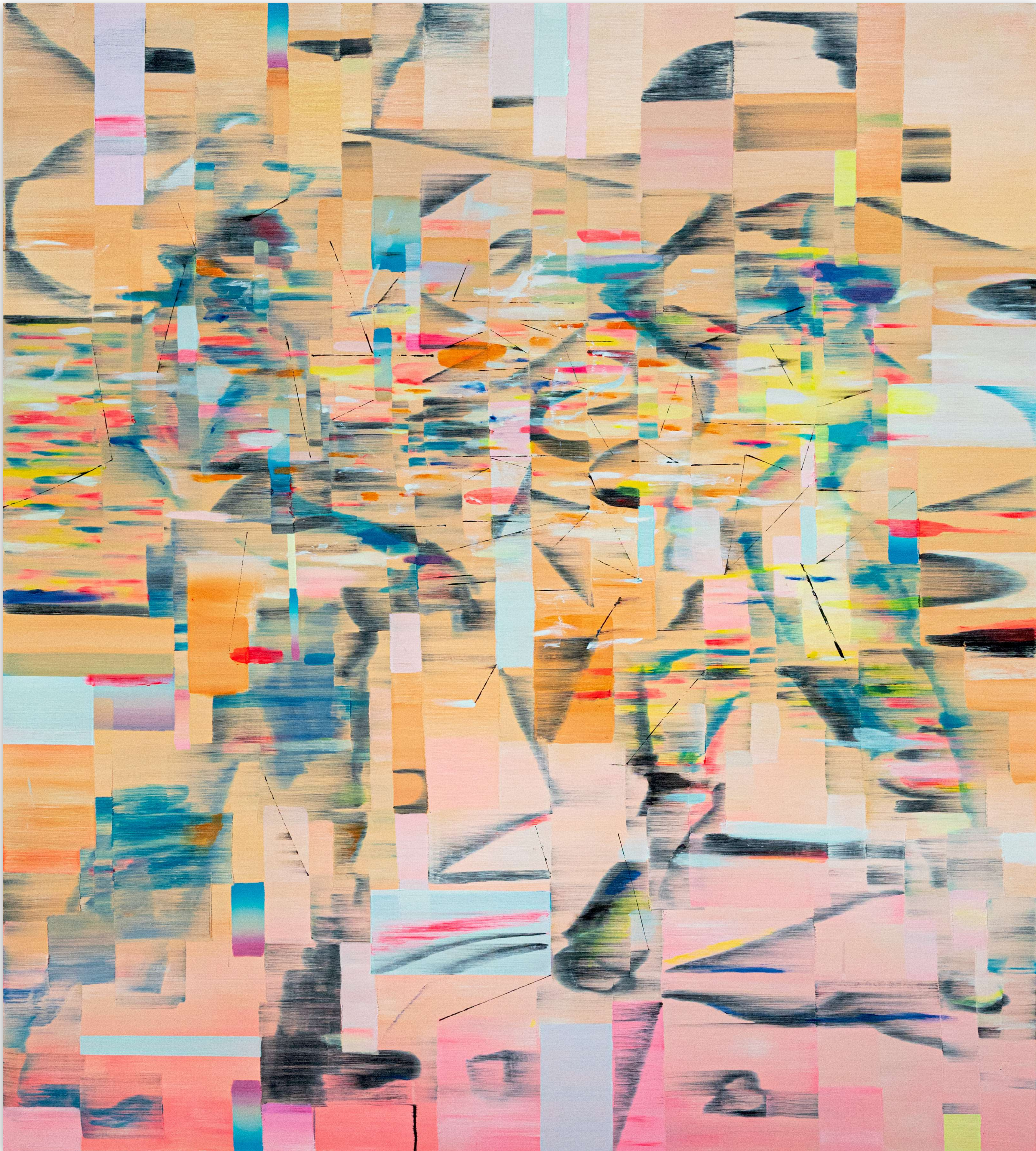




未知与接触
Unknown and Touch

2024
布面油画
Oil on Canvas
200(h) × 240 cm





交换的可能性
Possibility of Exchange

2024
布面油画
Oil on Canvas
200(h) × 180 cm





介入者
Intervenor

2024
布面油画
Oil on Canvas
200(h) × 180 cm





拉扯闪电的男人
Man Pulling the Lightning Bolt

2024

布面油画

Oil on Canvas

200(h) × 180 cm





保留节目

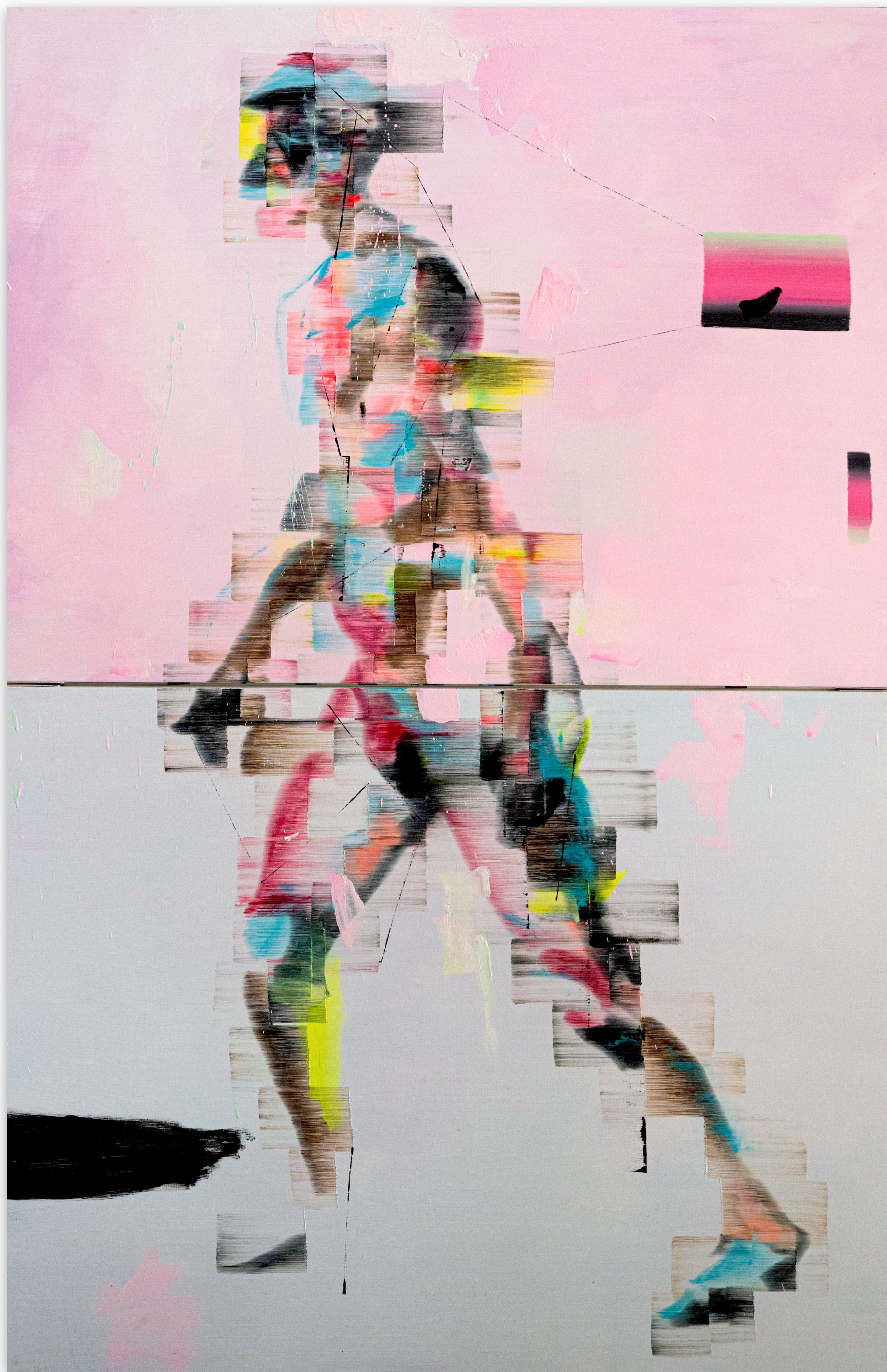
Reserved Program

2024

布面油画

Oil on Canvas

100(h) × 130 cm*2



诞生问题的一种方式
A Way to Create Problem

2024

布面油画

Oil on Canvas

100(h) × 130 cm*2



不可预知的面孔 1
Unpredictable Face 1

2024

布面油画

Oil on Canvas

50(h) × 40 cm



不可预知的面孔 2
Unpredictable Face 2

2024

布面油画

Oil on Canvas

50(h) × 40 cm



不可预知的面孔 3
Unpredictable Face 3

2024

布面油画

Oil on Canvas

50(h) × 40 cm



不可预知的面孔 4
Unpredictable Face 4

2024

布面油画

Oil on Canvas

50(h) × 40 cm



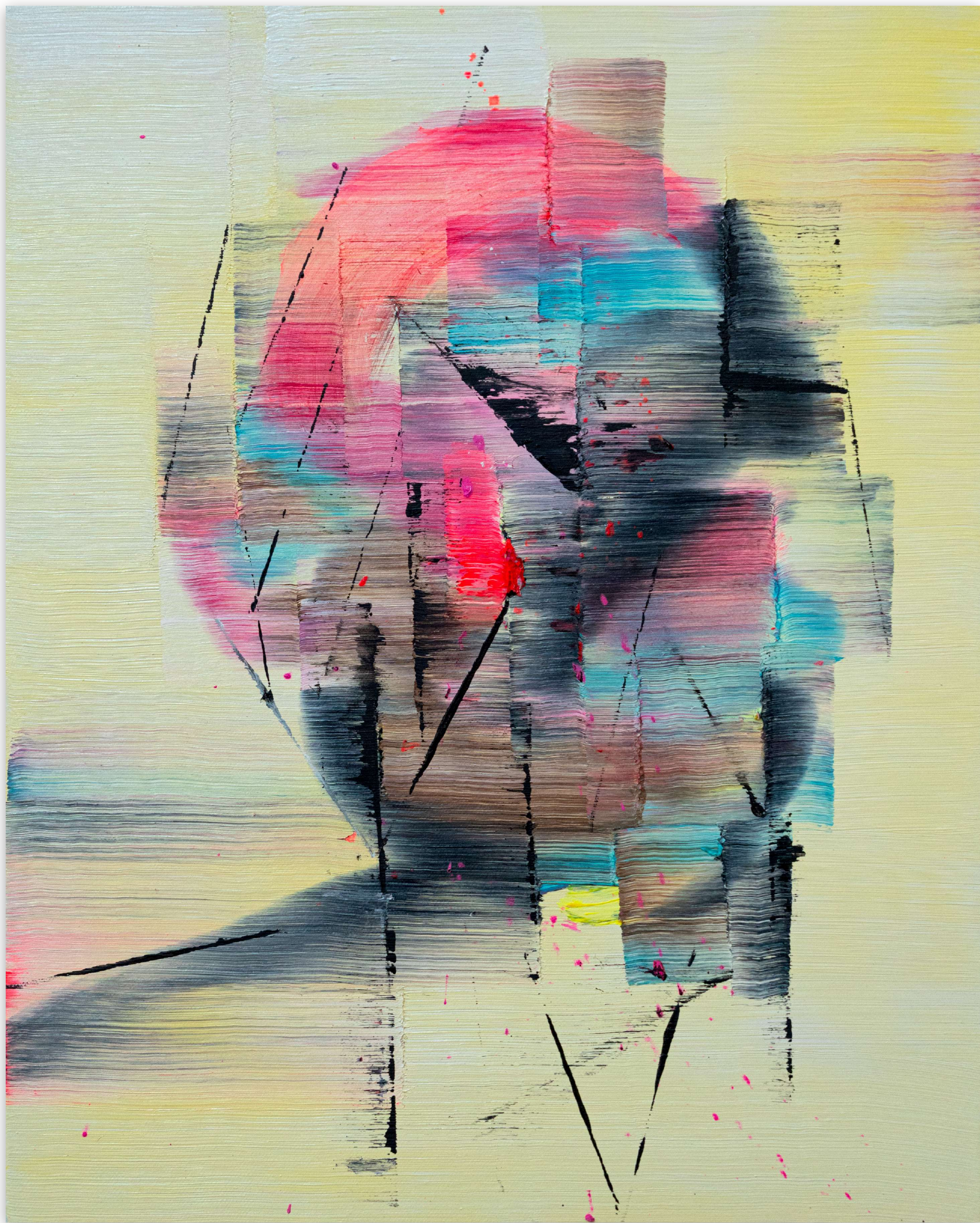
不可预知的面孔 5
Unpredictable Face 5

2024

布面油画

Oil on Canvas

50(h) × 40 cm



不可预知的面孔 6
Unpredictable Face 6

2024

布面油画

Oil on Canvas

50(h) × 40 cm



不可预知的面孔 7
Unpredictable Face 7

2024

布面油画

Oil on Canvas

50(h) × 40 cm



不可预知的面孔 8
Unpredictable Face 8

2024

布面油画

Oil on Canvas

50(h) × 40 cm



不可预知的面孔 9
Unpredictable Face 9

2024

布面油画

Oil on Canvas

50(h) × 40 cm



不可预知的面孔 10
Unpredictable Face 10

2024

布面油画

Oil on Canvas

120(h) × 100 cm



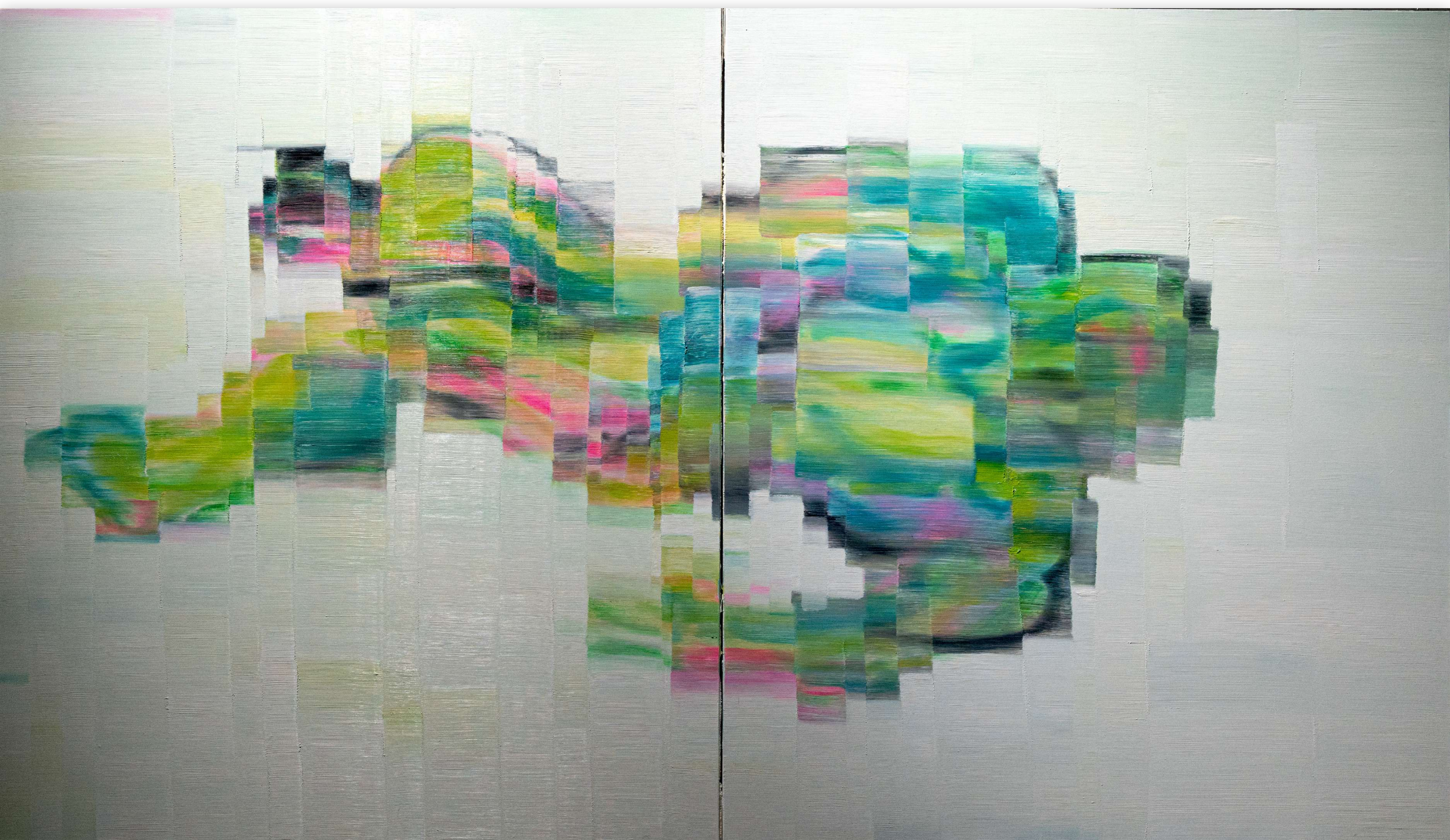
不可预知的面孔 11
Unpredictable Face 11

2024

布面油画

Oil on Canvas

120(h) × 100 cm



白昼睡眠
Daytime Sleep

2022

布面油画

Oil on Canvas

150(h) × 130 cm*2

程亮 (Cheng Liang), 1985 年出生于兰州。2009 年本科毕业于中央美术学院油画系第四工作室，2021 年研究生毕业于中央美术学院油画系第三工作室。现工作生活于北京。作品被震旦博物馆收藏。

近期部分展览

2024

电子羊会梦见仿生人吗，珀德画廊，上海

罗马湖异步，尔空间，北京

2023

绘画小时代，33ml offspace, 上海

矢量游戏厅，珀德画廊，上海

加载，珀德画廊，上海

碎镜，珀德空间，上海

驰辉，震旦博物馆，上海

在那做梦人的梦中 被梦见的人醒了，珀德画廊，上海

2022

静态加速，珀德艺术空间，上海



珀德画廊 Bird Gallery 成立于 2021 年，专注于挖掘推广具有前瞻性、思想性的优秀当代艺术家，关注支持艺术家的成长与创作，呈现独特的高质量展览，与艺术家、藏家、高端品牌携手推动当代艺术的发展，共同踏上艺术收藏与生活方式的探索之旅。

Founded in 2021, Bird Gallery is dedicated to discovering and promoting visionary and thought-provoking contemporary artists. We focus on supporting artists' growth and creativity, presenting unique high-quality exhibitions, and collaborating with artists, collectors, and luxury brands to propel the development of contemporary art. Together, we embark on a journey of artistic collection and exploration of lifestyle.

Bird Gallery 珀德画廊

普陀区莫干山路 50 号 15 号楼 101 室，中国上海 200060

Room 101, Building 15, No.50, Moganshan Road, Putuo District, Shanghai 200060, China

T: 17621179008 | E: info@birdgallery.cn