

An abstract painting with a textured surface. The background is a mix of deep purple and vibrant blue. A hand is depicted in a reddish-purple hue, reaching out from the top right. Several horizontal green lines, resembling waves or brushstrokes, cross the middle of the composition. The overall style is expressive and gestural.

SAISEN
A R T

亲密方式
INTIMATE
MODE

钟乐星
ZHONG LEXING

中國上海市普陀區莫幹山路50號6號樓4樓，邮编200060
Floor 4, Building 6, No.50 Mogan shan Rd, Putuo District, Shanghai, 200060, China
Tel: 86-021-5404 2765 Email: saisen@saisenart.com

亲密方式

INTIMATE MODE

“推拿图系列”是艺术家钟乐星以古老的中医推拿术手法图示为基本向当代艺术的转译，图与文的冲撞就如作品中反差强烈的大色块背景，衬托出推拿术的姿态、手法以及治愈功能，在身体与身体的短暂接触下，将陌生关系发酵为亲密模式。

“毛笔画系列”聚合了碎笔和断面组合在画面上错位的花鸟，虚化的风景。就如“推拿图”中被悬置的身体愕然不响的状态，“毛笔画”再次加深了亲密接触转为戛然而止的刹那间，意念困顿于被石化的肉身。终究，绘画是描绘谜团般的世界的谜团本身。

丹麦哲学家克尔凯郭尔说，嘲笑世界的荒诞是令人沮丧的，为此哭泣也让人难过。嘲笑或是哭泣，钟乐星绘画中或此或彼的气息，提供给当代人用身体动作做为抵抗，埋藏在破损和不适中与世界相处的亲密方式。

Zhong Lexing's "Chinese Massage Series" is based on the illustrations of the ancient massage technique and translated them into contemporary paintings. The contrasting color backgrounds of the works set off the gestures, techniques, and healing functions of Chinese massage. Under a brief contact between two strangers' bodies, an intimate mode starts to ferment within the unfamiliar relationships.

The "Brush Painting Series" is a collection of broken brushes and cross sections of dislocated flowers and birds, and deformed landscapes. Just as the suspended body in the "Massage Painting Series" is stunned and silent, the "Brush Painting Series" deepens the moment when the intimate contact turns into an abrupt stop, and mind is trapped in the petrified body. After all, painting is the enigma itself that depicts the enigmatic world.

Danish philosopher Kierkegaard said that it is frustrating to laugh at the absurdity of the world, and sad to cry about it. Laughing or crying, the either/or atmosphere in Zhang's paintings offers us an intimate way to be in the world while keeping on resisting through bodily gestures and actions. Hidden within the broken and discomfort of gestures, an intimate mode.



钟乐星

Zhong Lexing

现生活和工作在上海。他通过对传统医学类画谱的使用，异化了示意图的叙事空间。其作品不断重复接触、触摸（touch）核心主题，但又完全避免线性的故事线索。他把原本的故事撕裂、去呈现了关于身体和遭遇的个人陈述，唤起新的视觉体验。

钟乐星于2014年获得约翰莫尔绘画奖（中国）。作品曾在各项重要展览中展出，曾为2014年英国利物浦驻地艺术家，2020年约翰摩尔最佳观众奖赞助人。

Born in Hunan in 1984, currently lives and works in Shanghai. He alienated the narrative space of schematic diagrams through the use of traditional medical picture books. His works keep repeating the core themes of contact and touch, but completely avoid linear story clues. He tore the original story to present a personal statement about the body and encounters, evoking new visual experiences.

Zhong Lexing won the John Moores Painting Prize (China) in 2014. His works have been exhibited in various important exhibitions, and he was the artist-in-residence in Liverpool, England in 2014.

SAISEN
A R T



推拿图 20180809
Tape of the massage 20180809

2018
Oil on canvas
布面油画
235(H)×170 cm×2pcs

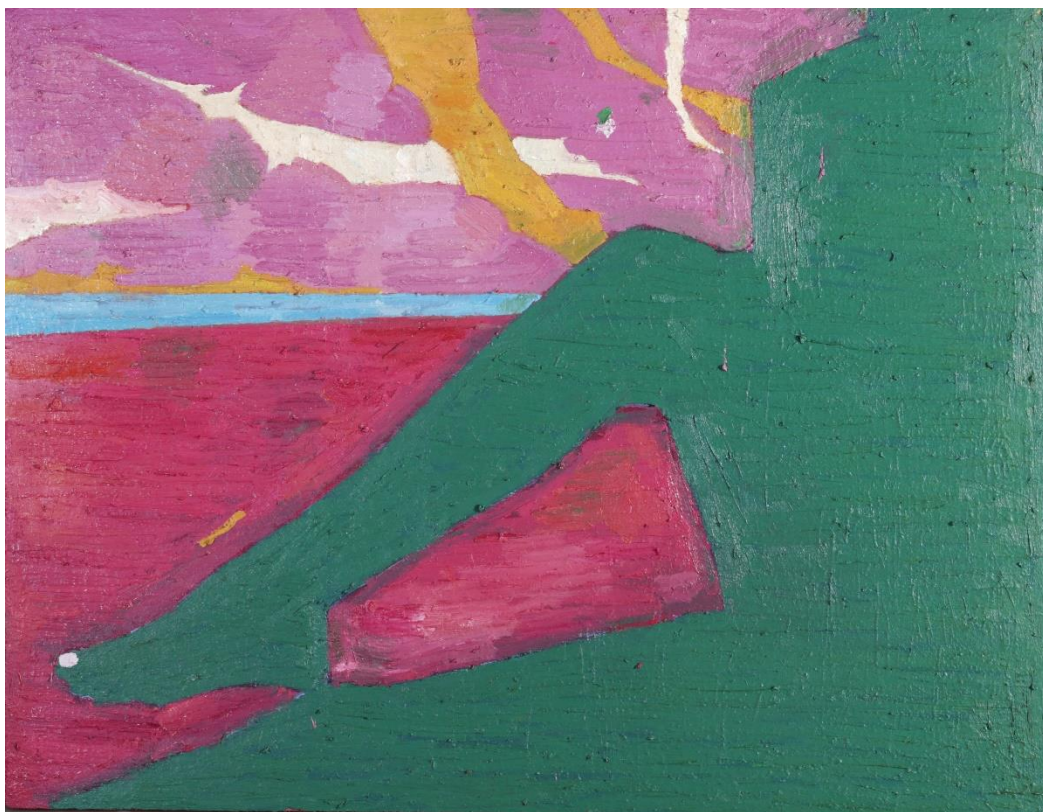
SAISEN
A R T



推拿图 20190609
Tape of the massage 20190609

2019
Oil on canvas
布面油画
114(H)×146 cm

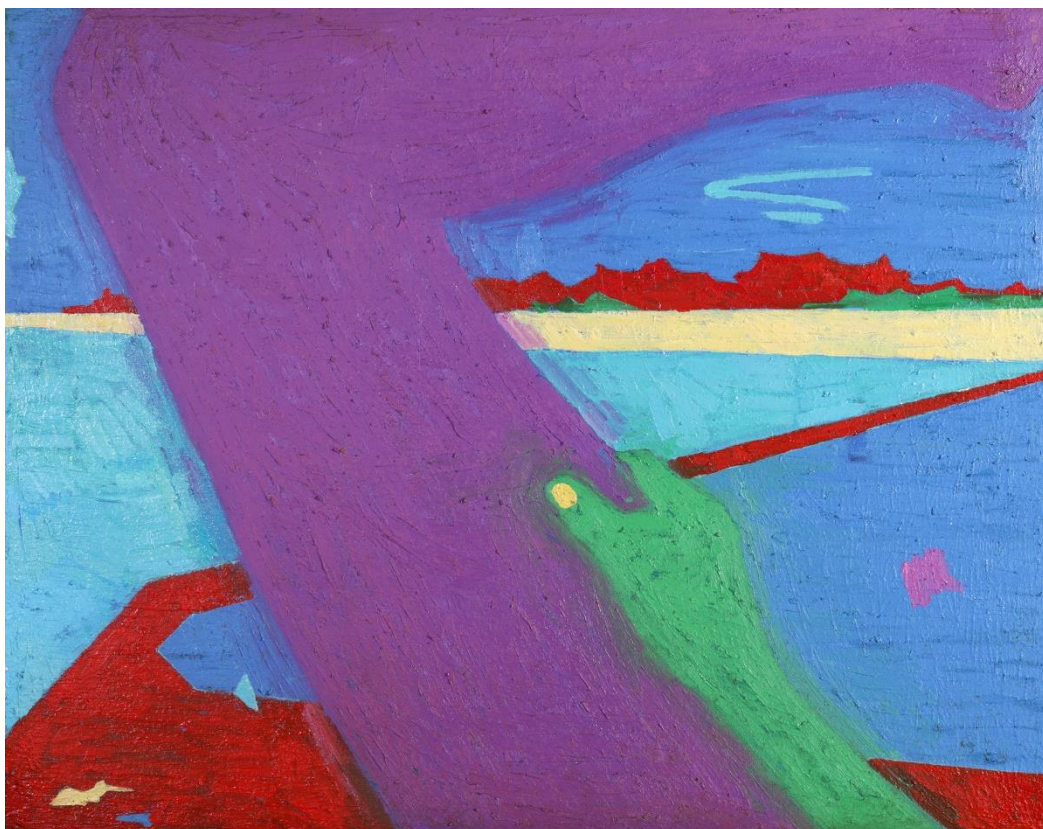
SAISEN
A R T



推拿图 20210203
Tape of Massage 20210203

2021
Oil on canvas
布面油画
114(H)×146 cm

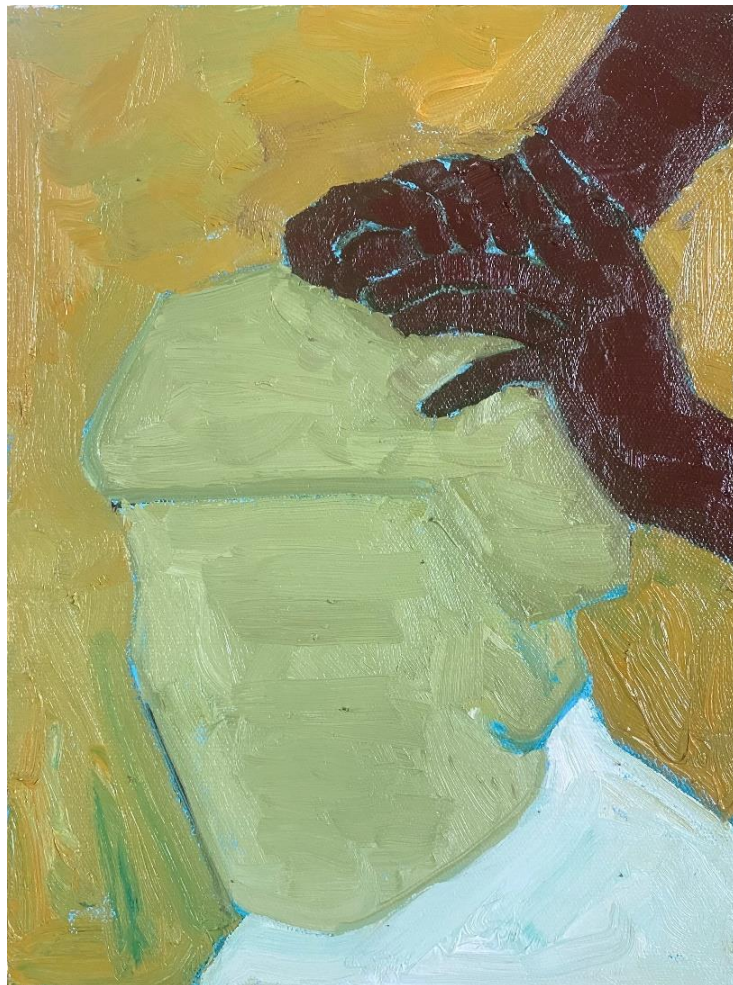
SAISEN
A R T



推拿图 20230801
Tape of Massage 20230801

2023
Oil on canvas
布面油画
130(H)×162 cm

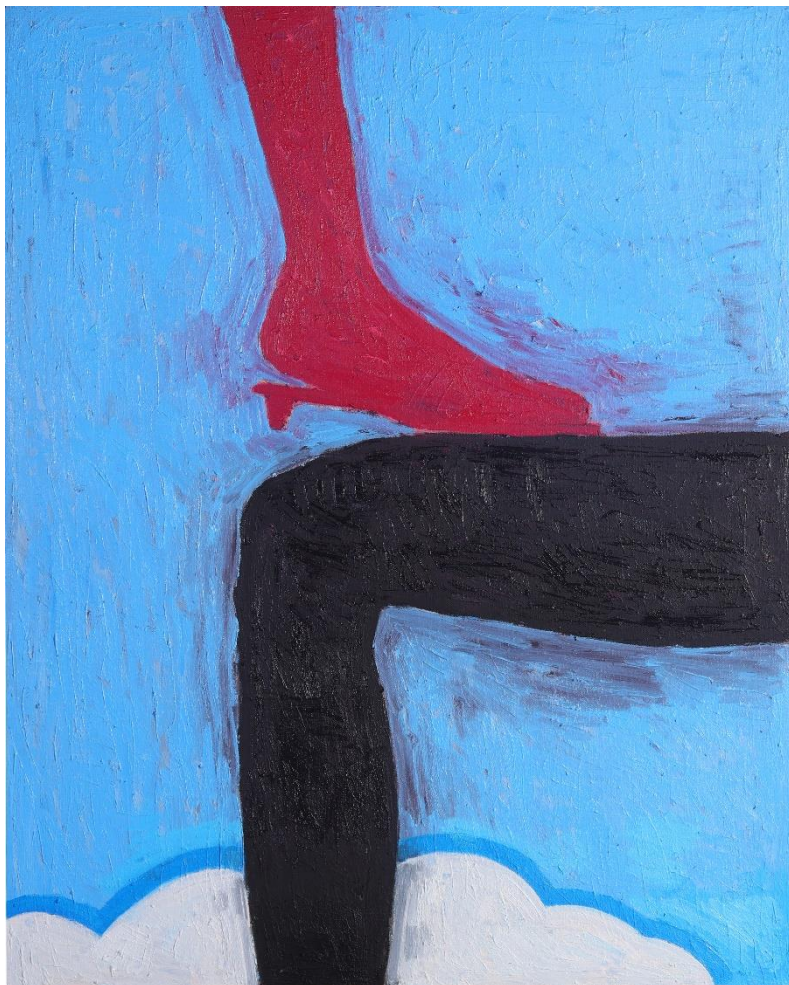
SAISEN
A R T



推拿图 20240702
Tape of Massage 20240702

2024
Oil on canvas
布面油画
40(H)×30 cm

SAISEN
A R T

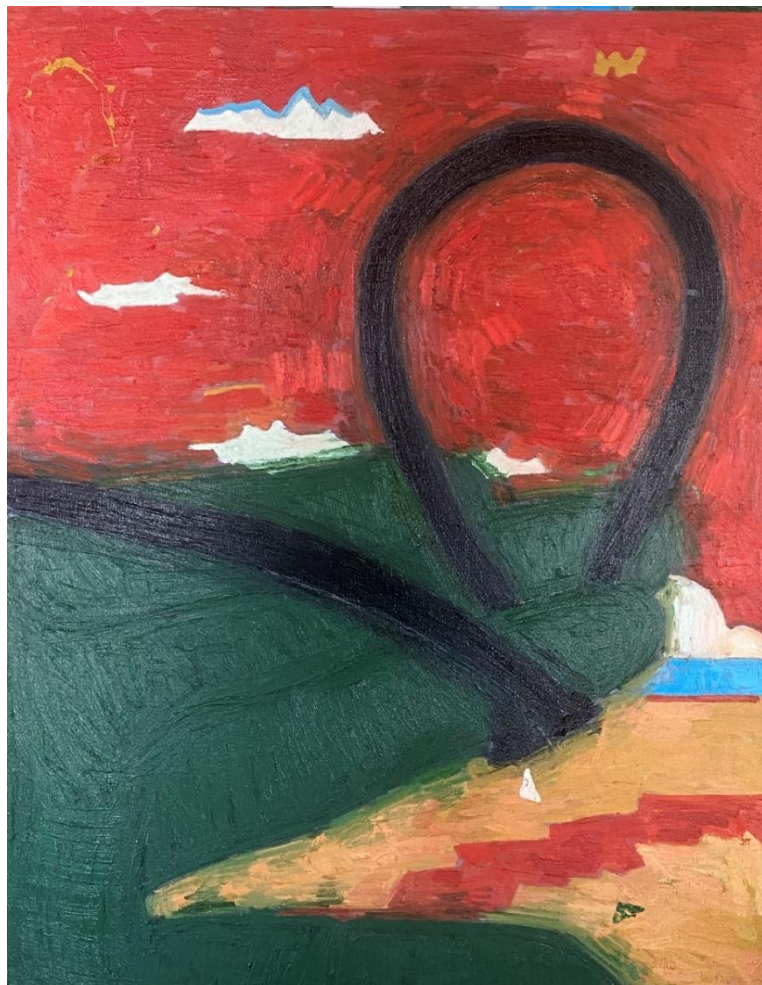


推拿图 20230703
Tape of Massage 20230703

2023
Oil on canvas
布面油画
162(H)×130 cm



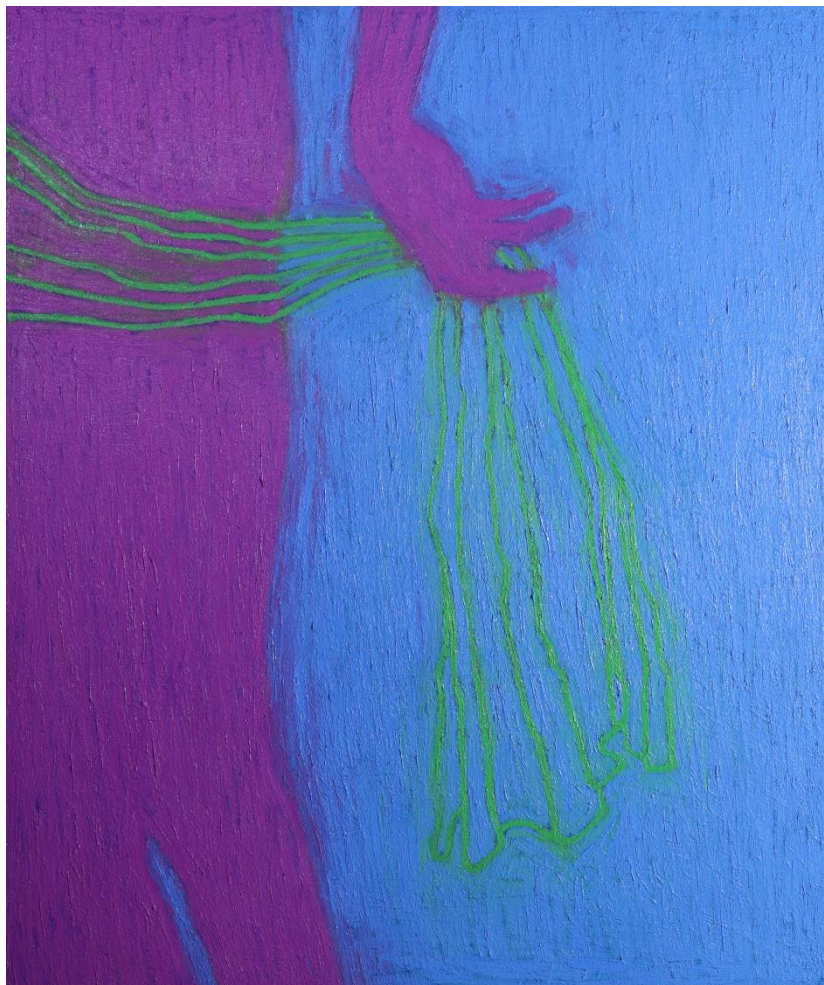
SAISEN
A R T



关系项 20200304
Relatum 20200304

2020
Oil on canvas
布面油画
146(H)×114 cm

SAISEN
A R T



关系项 20200214
Relatum 20200214

2020
Oil on canvas
布面油画
220(H)×180 cm



SAISEN
A R T



关系项 20200703
Relatum 20200703

2020
Oil on canvas
布面油画
160(H)×60 cm

SAISEN
A R T



关系项 20200909
Relatum 20200909

2020
Oil on canvas
布面油画
114(H)×146 cm

中國上海市普陀區莫幹山路50號6號樓4樓, 邮编200060
Floor 4, Building 6, No.50 Mogan Shan Rd, Putuo District, Shanghai, 200060, China
Tel: 86-021-5404 2765 Email: saisen@saisenart.com



SAISEN
A R T



关系项 20230209
Relatum 20230209

2023
Oil on canvas
布面油画
162(H)×130 cm



SAISEN
A R T



关系项 20230308
Relatum 20230308

2023
Oil on canvas
布面油画
130(H)×162 cm

SAISEN
A R T



关系项 20230506
Relatum 20230506

2023
Oil on canvas
布面油画
162(H)×130 cm

SAISEN
A R T



关系项 20240701
Relatum 20240701

2024
Oil on canvas
布面油画
40(H)×30 cm

SAISEN
A R T



关系项 20240703
Relatum 20240703

2024
Oil on canvas
布面油画
50(H)×30 cm

SAISEN
A R T



毛笔画 20230509
Brush Painting 20230509

2023
Oil on canvas
布面油画
146(H)×114 cm



SAISEN
A R T



毛笔画 20230708
Brush Painting 20230708

2023
Oil on canvas
布面油画
130(H)×162cm

中國上海市普陀區莫幹山路50號6號樓4樓, 邮编200060
Floor 4, Building 6, No.50 Mogan Shan Rd, Putuo District, Shanghai, 200060, China
Tel: 86-021-5404 2765 Email: saisen@saisenart.com



SAISEN
A R T



毛笔画 20240201
Brush Painting 20240201

2024
Oil on canvas
布面油画
162(H)×130cm

SAISEN
A R T



毛笔画 20230908
Brush Painting 20230908

2023
Oil on canvas
布面油画
146(H)×114cm

SAISEN
A R T



毛笔画 20231001
Brush Painting 20231001

2023
Oil on canvas
布面油画
162(H)×130cm



SAISEN
A R T



毛笔画 20231006
Brush Painting 20231006

2023
Oil on canvas
布面油画
220(H)×180 cm

SAISEN
A R T



毛笔画 20231107
Brush Painting 20231107

2023
Oil on canvas
布面油画
162(H)×130 cm

SAISEN
A R T



毛笔画20240308
Brush Painting 20240308

2024
Oil on canvas
布面油画
170(H)×235 cm

中國上海市普陀區莫幹山路50號6號樓4樓, 邮编200060
Floor 4, Building 6, No.50 Mogan Shan Rd, Putuo District, Shanghai, 200060, China
Tel: 86-021-5404 2765 Email: saisen@saisenart.com



SAISEN
A R T

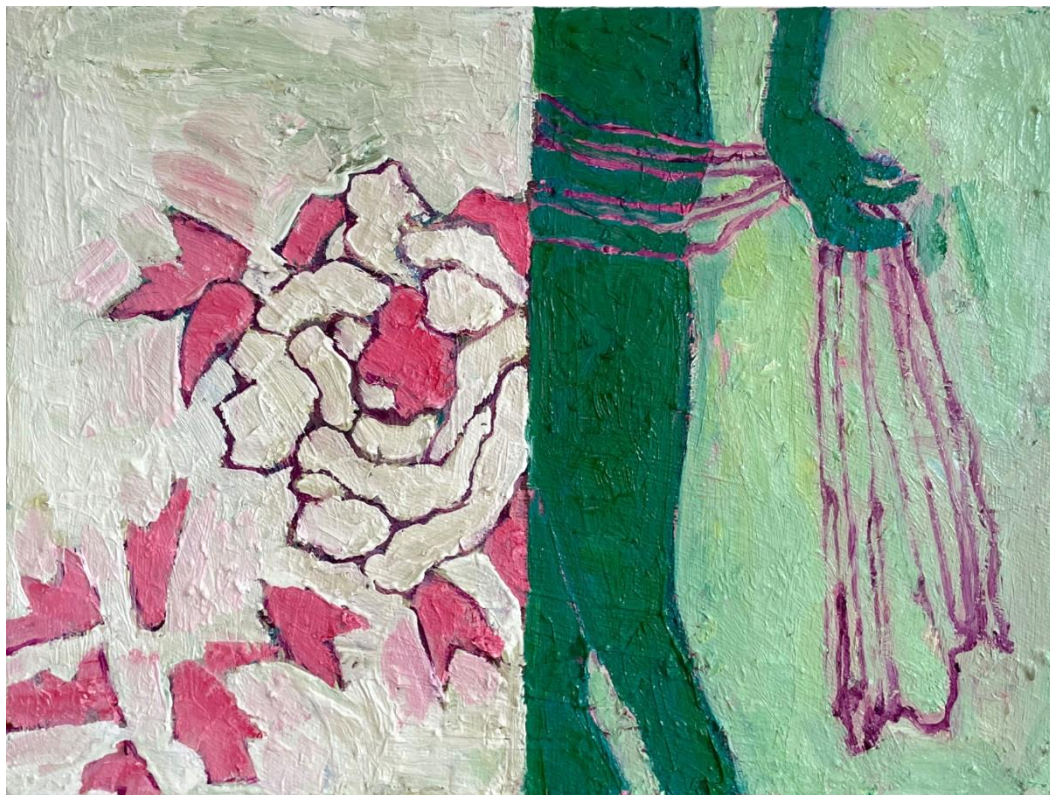


毛笔画20240503
Brush Painting 20240503

2023
Oil on canvas
布面油画
130(H)×162 cm

中國上海市普陀區莫幹山路50號6號樓4樓, 邮编200060
Floor 4, Building 6, No.50 Mogan Shan Rd, Putuo District, Shanghai, 200060, China
Tel: 86-021-5404 2765 Email: saisen@saisenart.com

SAISEN
A R T



亲密方式
Intimate Mode

2024
Oil on canvas
布面油画
30(H)×40 cm

中國上海市普陀區莫幹山路50號6號樓4樓, 邮编200060
Floor 4, Building 6, No.50 Mogan Shan Rd, Putuo District, Shanghai, 200060, China
Tel: 86-021-5404 2765 Email: saisen@saisenart.com