



井  
士  
剑

植物的意志  
KUNSTWOLLEN

JING SHIJIAN  
SOLO EXHIBITION

2023.9.8  
-10.21

阿拉里奥画廊上海 Arario Gallery Shanghai  
上海市徐汇区龙爱路7号芒果广场D栋一层1F, Building D,  
Mango Hub, 7 Longai Rd. Mango Hub, Xuhui District, Shanghai, China

ARARIO  
GALLERY

# 井士剑：植物的意志

JING Shijian: Kunstwollen

阿拉里奥画廊欣然宣布将于2023年9月8日至10月21日呈现艺术家井士剑个展“植物的意志”Kunstwollen。展览不仅涵盖了艺术家近年的油画作品与绢本作品，以呈现艺术家对艺术语言的混合性使用与其创作风格不断嬗变的清晰线索。

作为“新西湖绘画”的代表人物之一，井士剑始终将目光望向自然本初，他提出“艺术地理”的概念，强调地理外延和地域景观对于艺术家创作的影响，关注人与艺术发生地自然景象与历史文化的关联。他生长于中国北方，而后又在江南生活多年。随着地理维度的迁移和所见之景的变换，体现在他的作品中，便有了相辅相承的以“新西湖”绘画和“植物意志”绘画为表现脉络的作品，如描绘西湖人文景致的《江湖·二十四小时》、《湖舟》系列等，及以植物意志为表现的“石榴系列”和“罌粟系列”等。他近期的作品依然根植于自然景观，将生活中熟悉而普遍存在的植物，运用混合性语言的手法呈现，以探讨自然与社会、植物与人类的共生关系。

“植物系列”是井士剑三十年前便开始创作并延续至今的系列，其中反复出现的意象——石榴和罌粟花等，是自然乡野常见的植物。将其入画时，他摒弃了传统的静物画法，而是经由对植物的观察和描绘，重返其自然生长的形态，在还原自然本初的过程中，抵达原本的真实。他的绢本系列就是这一艺术理念的例证，他笔下的罌粟花素雅清淡，呈现出其自然的状态，还原了视觉与知觉的真实。他描绘的植物性表现了中国传统的人文精神属性。

面对创作，他始终保持着开放的态度，以严谨的视觉感知逻辑创造绘画，不曾将自己局限在某种固定的创作方法中。纵观近期井士剑的作品，不难发现其创作风格的变化。在用色上，画面一改沉静悠远的棕灰色调，而愈发浓重丰富。他近期的植物绘画似乎更强调一种介于真实和想象之间叙述叙事——以一个意象为锚点，展开艺术的联想，赋予画笔下的事物以精神性的维度。以古希腊月亮崇拜、女性生殖崇拜及狩猎女神阿尔忒弥斯为原型创作的作品《阿尔忒弥斯》，以鲜明浓郁的色彩勾勒，象征大地之母丰硕的生命力，同时也是向艺术家路易斯·布尔乔亚的致敬。

经由植物性，井士剑进而开始思考我们切身所处的现实，展开了对于物我关系的追问和探寻。他的创作从对事物存在方式的描绘再现开始，逐渐接近心灵。正如著名美术史学家范景中先生所言：“植物，物自体也。艺术家观其形态表象，意志生焉。艺术家创造艺之痛苦，达于极致，与植物不可动摇之安宁，其境界一也。”井士剑的创作既有自然的踪迹，又饱含精神的蕴藏，将物与我相统一，成为一种对生命万物体察和关照的方式。

# 井士剑：植物的意志

JING Shijian: Kunstwollen

ARARIO GALLERY Shanghai is pleased to announce artist JING Shijian's solo exhibition "*Kunstwollen*", on view from September 8th to October 21st, 2023. This exhibition encompasses JING 's recent oil paintings and silk works, presenting a clear trail of the artist's hybrid use of artistic language and his ever-evolving creativity.

As one of the representative figures of "New West Lake Painting", JING has always directed his gaze towards the nature of the original. He puts forward the concept of "Geography of Art", emphasizing the influence of geography and regional landscape on artists' creations, and focusing on connections between natural scenery, history and culture where art and human converge.

Growing up in northern China and later living in Hangzhou, his works reflect the migration of geographical dimensions and shifting landscapes witnessed over time. This influence is evident in works like "*Jianghu* (literal meaning river, lake) - *24 Hours*" series ( "江湖·二十四小时" ) and "*Hu Zhou* (literal meaning river, boat) " series ( "湖舟" ), depicting West Lake scenery. He also explored northern plants in the "*Pomegranate*" and "*Poppy*" series. More recently, JING has progressed to employing surrealistic techniques to present plants in new ways, aiming to discuss the symbiosis between nature/society and plants/humanity.

The recurring images in JING 's longstanding plant series - namely pomegranate and poppy flowers commonly found in northern China - depart from still-life techniques. Instead, he seeks their natural growth forms to capture the primordial essence of truth. This concept is also exemplified in his silk "*Poppy*" series, where the elegant, subtle poppies portrayed restore authentic visual and perceptual experiences of their natural state.

Over the decades of his artistic career, JING remains open-minded, never confined to fixed methods. In recent years, his works have revealed colorful evolution - paintings moving from serene brownish-grays into increasingly vibrant tones. Latest plant depictions emphasize a stronger reality-imagination narrative. Using images as anchors, he unfolds associations and imbues spiritual dimension. The work, "*Artemis*", inspired by ancient Greek worship and reverence for motherly fertility, is created in bold vivid hues symbolizing the abundance of Mother Earth, which is also a tribute to the artist Louise Bourgeois.

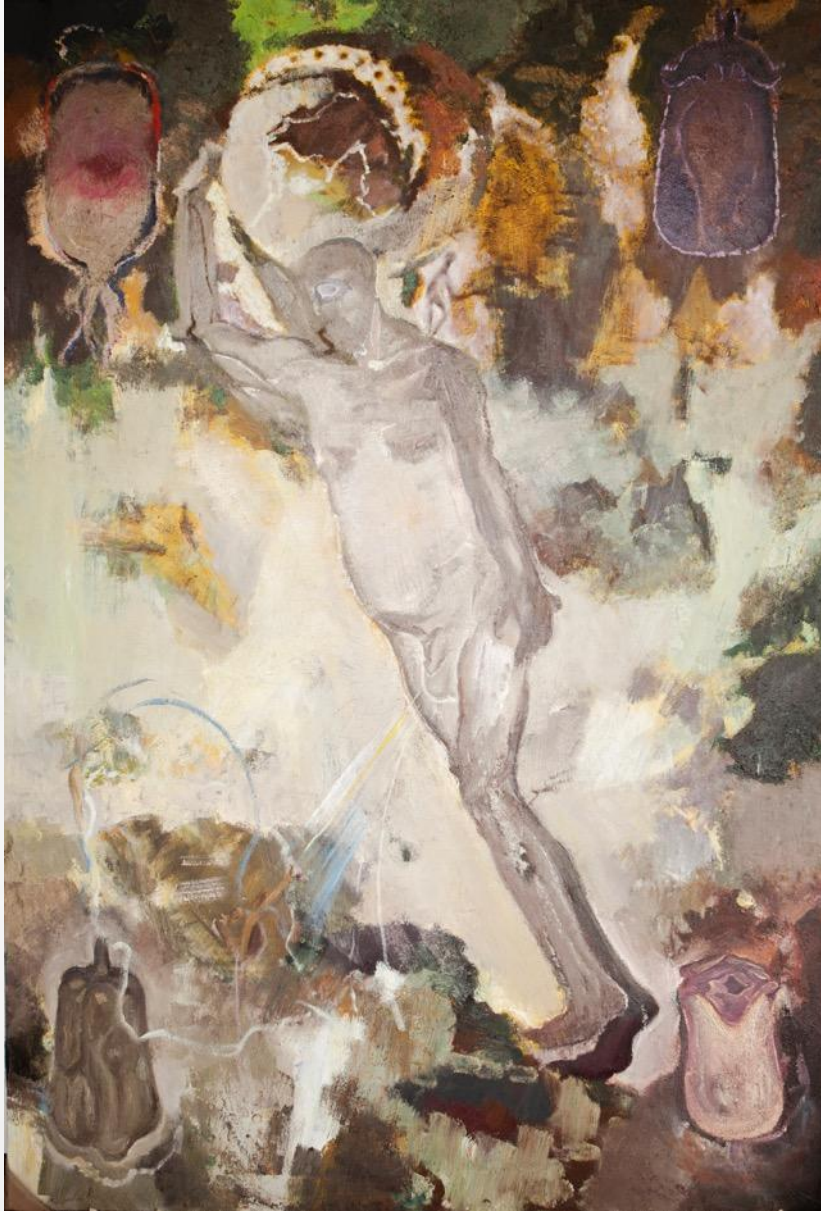
As art historian Fan Jingzhong wrote, "*A plant is a 'being-in-itself' , by observing and depicting the forms and appearances of plants and trees, the artist develops his will of art. Akin to the unshakable tranquility of plants and trees, artists struggle in their pursuit of spiritual realm.*" Jing Shijian's journey starts depicting plant existences, gradually approaching the soul realm. His works bear nature's traces while containing profound spiritual essence, unifying self with the world. It ultimately becomes a way of observing and caring for all aspects of life through deeper contemplation of the reality in which we are all embedded.

禅家颂雪压芦苇，柔韧而不折萎；诗人写落花依草，虽坠落，依然是美；哲人见大树庄严，即逸兴遄飞。此是植物意志，亦造艺意志，西人所谓Kunstwollen也。植物，物自体也。艺术家观其形态表象，意志生焉。艺术家造艺之痛苦，达于极致，与植物不可动摇之安宁，其境界一也。拜览井士剑教授之《植物意志》启余感悟于上。范景中谨记。

The Zen master reveres the slender reeds, yielding gracefully against the snow but never breaking; The poet praises the flowers, fading yet still exuding beauty; The philosopher admires the wisdom of mighty trees that illuminate their soaring spirits. Thus, the inspiration of art emerges along with the will of plants, which some Western scholars describe as "Kunstwollen" (the will of art). A plant is a 'being-in-itself', by observing and depicting the forms and appearances of plants and trees, the artist develops his will of art. Akin to the unshakable tranquility of plants and trees, artists struggle in their pursuit of spiritual realm. These are my thoughts on viewing Professor JING Shijian's solo exhibition "*Kunstwollen*".

by FAN Jingzhong





**酒神的果园 / *Dionysian's orchard***

布面油画 oil on canvas

300 x 200 cm

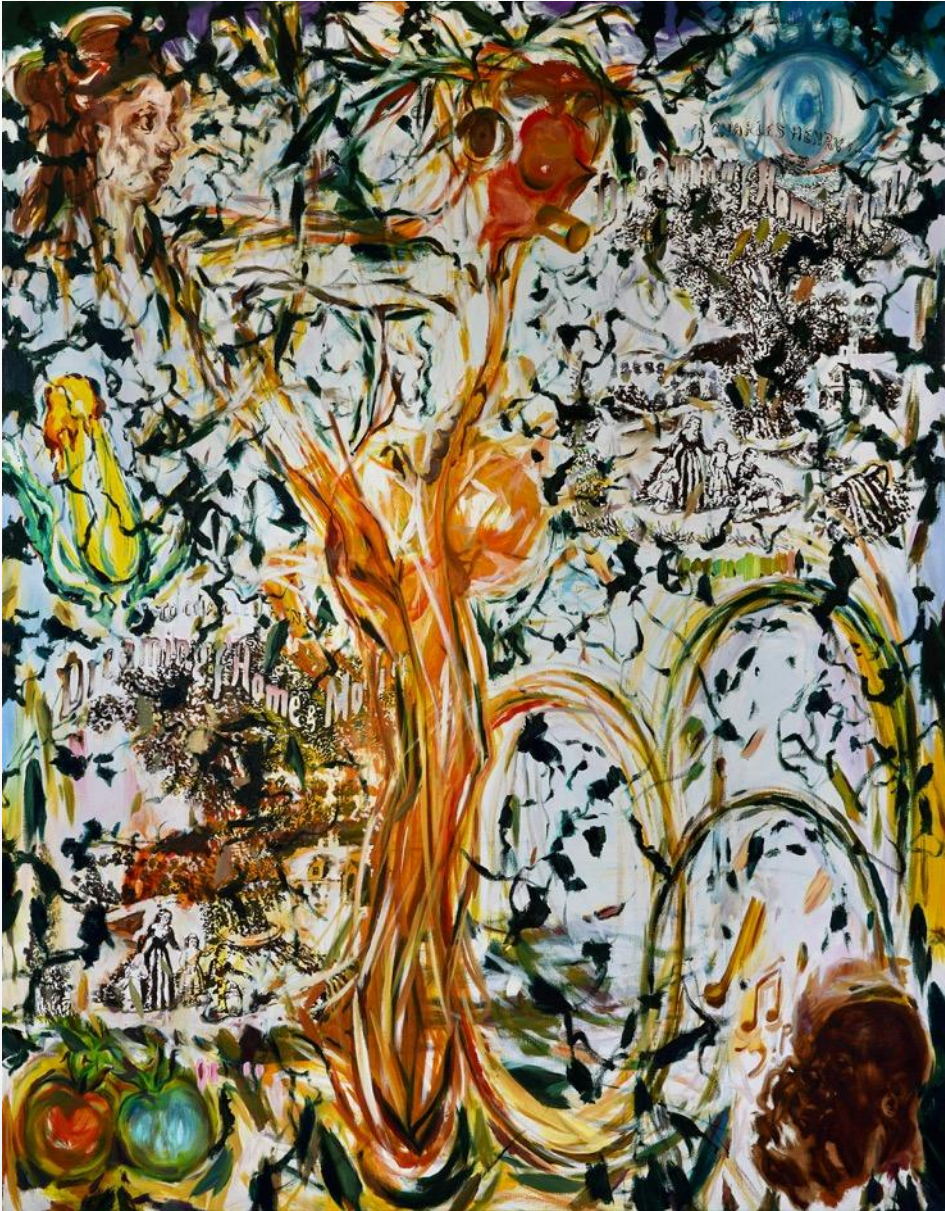
2015 – 2020

ARARIO GALLERY



“植物的意志”展览现场，阿拉里奥画廊，中国上海





歌谣 / *Ballad*

布面油画 oil on canvas

270 x 200 cm

2023



**阿尔忒弥斯——1995年向路易斯·布尔乔亚致敬**  
*Artemis - a tribute to Louis Bourgeois in 1995*

布面油画 oil on canvas

270 x 200 cm

2015 - 2020





**植物的意志 1 / *The will of plants 1***

布面油画 oil on canvas

200 x 270 cm

2023

ARARIO GALLERY



“植物的意志”展览现场，阿拉里奥画廊，中国上海



**植物的意志 2 / *The will of plants 2***

布面油画 oil on canvas

200 x 270 cm

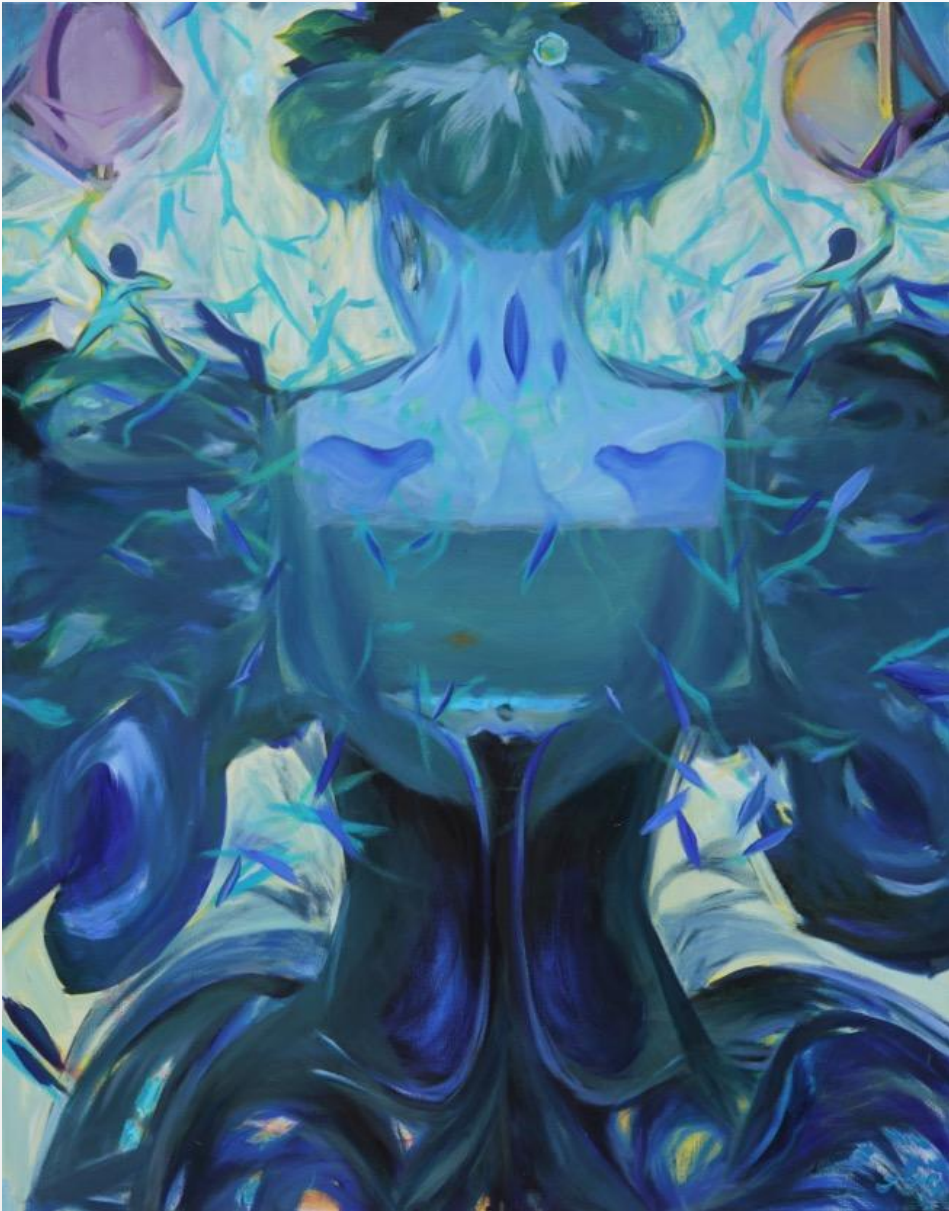
2023



ARARIO GALLERY



“植物的意志”展览现场，阿拉里奥画廊，中国上海



**蓝色的肖像 / *The portrait of blue***

布面油画 oil on canvas

180 x 150 cm

2023

# 艺术家自述

从工作线索和方法上，我更着迷于在纷繁的事物中寻找它们的共同法则，试图以混合的绘画语法，呈现出感觉的逻辑。在绘画过程中，我始终坚持首先为了自己的观看，即看着和看见。在愉悦与痛苦，确定与不确定的绞杀中，确立属于作品独立的存在。其后便形成它的独立生命力。预留给每个观看者自我的价值判断。

作品展览追溯到1996年我在上海美术馆与瑞士艺术家的第一次个展作品。它叙述了“植物意志”的时间与空间绵延。

感谢著名美术史学家范景中先生为展览“植物的意志”所撰写精辟言说，如其所是。

井士剑

2023年8月27日

I am fascinated by exploring commonalities amid nature's complexity. By first observing deeply through looking and seeing, I attempt to present sensation's logic through a blended syntax. Details establish independent vitalities within pleasure/pain and certainty/uncertainty struggles during the process. To leave space for viewers making their own judgments.

Since my debut at Shanghai Art Museum alongside a Swiss artist in 1996, narratives of "Will of Plants" space/time extension have continued developing.

I am grateful to the renowned art historian Mr. Fan Jingzhong for his insightful discourse on this exhibition "*Kunstwollen*", which truly captures its essence.

JING Shijian

August 27, 2023





绿色的肖像 / *The portrait of green*

布面油画 oil on canvas

180 x 140 cm

2023

ARARIO GALLERY



“植物的意志”展览现场，阿拉里奥画廊，中国上海



红色的肖像 / *The portrait of red*

布面油画 oil on canvas

180 x 140 cm

2023





植物的肖像 / *The portrait of plants*

布面油画 oil on canvas

180 x 140 cm

2023

ARARIO GALLERY



“植物的意志”展览现场，阿拉里奥画廊，中国上海



**林泉 / *Forest spring***

布面油画 oil on canvas

160 x 120 cm

2022





**绿荫 / *Green shade***

布面油画 oil on canvas

160 x 120 cm

2022

ARARIO GALLERY



“植物的意志”展览现场，阿拉里奥画廊，中国上海



**红绿 / *Red & green***

布面油画 oil on canvas

170 x 110 cm

2023





**金粉 / *Gold & pink***

布面油画 oil on canvas

170 x 110 cm

2023

ARARIO GALLERY



“植物的意志”展览现场，阿拉里奥画廊，中国上海



**五彩 / Colorful**

布面油画 oil on canvas

110 x 170 cm

2023





云端 / *High in the clouds*

布面油画 oil on canvas

170 x 110 cm

2018



**夜空 / *Night sky***

布面油画 oil on canvas

170 x 110 cm

2018



**林溪之光 / *The light of forest creek***

布面油画 oil on canvas

160 x 120 cm

2023





泉 / *Spring*

布面油画 oil on canvas

160 x 120 cm

2023

ARARIO GALLERY



“植物的意志”展览现场，阿拉里奥画廊，中国上海



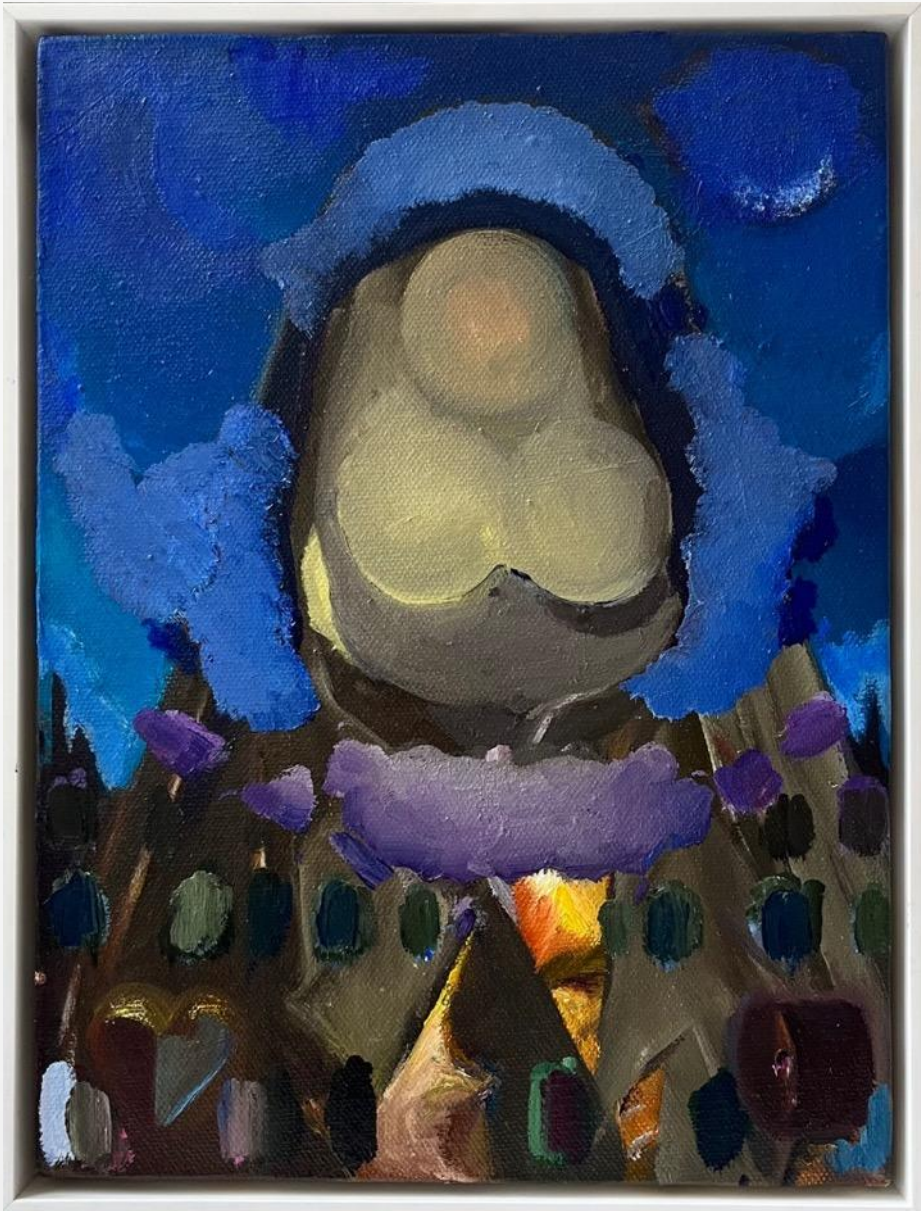
茶花 / *Camellia*

布面油画 oil on canvas

160 x 120 cm

2023





**三泉 / *Triple Falls***

布面油画 oil on canvas

40 x 30 cm

2022





**蓝房子 / *Blue house***

纸本粉彩 Pastel on paper  
37 x 50 cm (外框 55.5 x 70 cm)  
2022

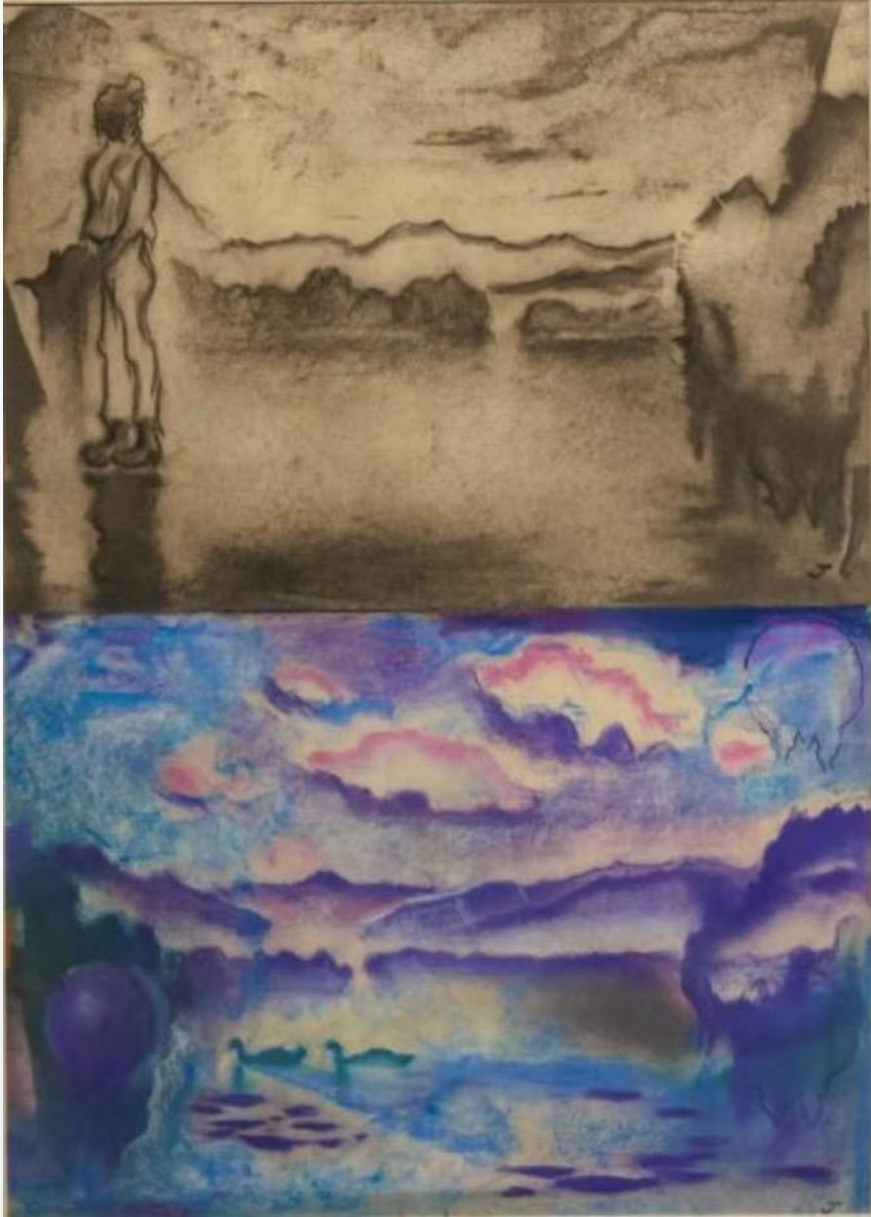


意志之光 形而上之光  
*Light of will; The metaphysical light*

纸本粉彩 Pastel on paper

100 x 80 cm

2019



湖上之光  
*The light on the lake*

纸本粉彩 Pastel on paper  
100 x 80 cm





形状之光  
*Light of shape*

纸本粉彩 Pastel on paper  
100 x 80 cm



## 绢本系列 “罌粟”

“罌粟”是井士剑在乡村田野间邂逅的一种植物，也是他自1993年便开始持续关注的一个创作题材，美艳与危险之间的张力，昙花一现式的从盛开到凋零的不确定性，让艺术家感应到这种植物与当代社会的某种相关性。这或许也是“罌粟”最初吸引他注意力的原因所在。井士剑的作品中给罌粟花添了一份单纯又略显柔弱的特质。他为它们命名为“摇曳的自然”。艺术家总能看到它自然的状态：这是生长在自然中的植物，它在微风里摇曳，柔弱而美好，花朵娇艳脆弱，向阳而笑、朝生暮死。“他将自己对这一物象的综合认知还原到观者眼前”（戴继龙语），让观者自己去对其进行判断，得出自己的答案。



**罌粟 / *Poppy***

絹本水彩 Watercolor on silk

29 x 42 cm (外框 53.5 x 73.5 cm)

2019



**罂粟 / *Poppy***

絹本水彩 Watercolor on silk  
29 x 42 cm (外框 53.5 x 73.5 cm)  
2019



**罌粟 / *Poppy***

絹本水彩 Watercolor on silk

29 x 42 cm (外框 53.5 x 73.5 cm)

2019





**罌粟 / *Poppy***

絹本水彩 Watercolor on silk

29 x 42 cm (外框 53.5 x 73.5 cm)

2019



**罌粟 / *Poppy***

絹本水彩 Watercolor on silk  
29 x 42 cm (外框 53.5 x 73.5 cm)  
2019



**罂粟 / *Poppy***

絹本水彩 Watercolor on silk

29 x 42 cm (外框 53.5 x 73.5 cm)

2019



**罌粟 / *Poppy***

絹本水彩 Watercolor on silk

29 x 42 cm (外框 53.5 x 73.5 cm)

2019





**罌粟 / *Poppy***

絹本水彩 Watercolor on silk

29 x 42 cm (外框 53.5 x 73.5 cm)

2019



**罂粟 / *Poppy***

絹本水彩 Watercolor on silk  
29 x 42 cm (外框 53.5 x 73.5 cm)  
2019



**罂粟 / *Poppy***

絹本水彩 Watercolor on silk  
29 x 42 cm (外框 53.5 x 73.5 cm)  
2019



**罂粟 / *Poppy***

絹本水彩 Watercolor on silk

29 x 42 cm (外框 53.5 x 73.5 cm)

2019





**罌粟 / *Poppy***

絹本水彩 Watercolor on silk

29 x 42 cm (外框 53.5 x 73.5 cm)

2019



**罂粟 / *Poppy***

絹本水彩 Watercolor on silk  
29 x 42 cm (外框 53.5 x 73.5 cm)  
2019



井士剑，1960出生于中国辽宁省黑山县。现任中国美术学院教授、博士生导师，现工作生活于杭州。从上世纪80年代至今，致力于当代艺术研究与创作。关注全球语境下的当代艺术研究和形成自身独特的艺术语言结构和词语与语法。以几十年一系列个展勾勒出艺术创作持续不断的艺脉。并以世界变幻的近几十年，自身经历和艺术创作揭示出历史、社会、未来的艺术断裂与碎片的多元文化的视觉景观。从1996年上海美术馆《艺术的对话》与瑞士艺术家的双个展，至今以《艺术地理》、《漫步江湖》、《江湖泛舟》三个展览，持续以视觉艺术，再现人与自然的境遇，与艺术原发性问题，以《宇宙的蜗牛和戏谑的风景》、《寓言》、《谜·湖》、《1/2》、《次九》、《长亭外·井士剑》等个展，关注艺术创作的逻辑、意志、混合语法等要素，对绘画的时间空间进行视觉回应与艺术实践。

Jing Shijian was born in 1960 in Heishan County, Liaoning Province, China. He is currently a professor at the China Academy of Art, and lives and works in Hangzhou. From the 1980s to the present, he has devoted himself to contemporary art research and creation. He focuses on the study of contemporary art in the global context and the formation of his own unique art language. Throughout his decades of art practice, his creations reveal the multicultural visual landscape of history, society, and the future of art. With a series of solo exhibitions in the past decades, he has outlined his continuous artistic endeavor. From the "Dialogue of Art" duo exhibition with Swiss artists at Shanghai Art Museum in 1996 to the "Geography of Art", "Roaming in the World" and "Rowing a Boat", he has continued to depict the situation of human and nature with visual art. In his solo exhibitions of "The Snail's Universe and Playful Landscape", "Fable", "Enigma · Lake", "1/2", "INFINITY" and "Out", he focuses on logic and hybrid techniques, visually responding to the basic topics of contemporary art.

## 井士剑

1960 出生于中国辽宁省黑山县。

现任中国美术学院教授，艺术家，工作和居住于中国杭州。

## 主要个展

- 2023 *植物的意志*, 阿拉里奥画廊, 中国上海
- 2023 *长亭外·井士剑*, 宁波美术馆, 中国浙江
- 2022 *次9*, 宝龙美术馆, 中国上海
- 2020 *迷·湖*, 光达美术馆, 中国杭州
- 2018 *蜗牛的宇宙和戏谑的风景*, 阿拉里奥画廊, 中国上海
- 寓言*, 山东美术馆, 中国济南
- 2017 *1/2井士剑个展*, 人可艺术中心, 中国杭州
- 2014 *驯化*, 德国德累斯顿
- 2012 *怀·素纸上作品展*, 上海艺术博览会, 中国上海
- 2009 *江湖泛舟——井士剑作品展*, 张江当代艺术馆, 中国上海
- 阅读的可能——冰冻2009秒 (行为艺术)*, 中国杭州
- 2008 *阅读的可能——冰冻2008秒 (行为艺术)*, 中国北京
- 2006 *艺术地理——井士剑个展*, 中国美术馆, 中国北京
- 漫步江湖——井士剑个展*, 上海美术馆, 中国上海

## 部分群展

- 2020 *和动力——首届济南国际双年展*, 山东美术馆, 中国济南
- 2019 *西湖—新西湖&新莱比锡绘画*, EIGEN+ART画廊, 德国柏林
- 2018 *众妙之门*, 上海当代艺术馆, 中国上海
- 哲匠之道——中国美术学院旧金山特展*, 美国旧金山
- 2017 *江左风华——乌镇雅园当代艺术邀请展*, 乌镇雅达文化艺术中心, 中国浙江
- 2016 *理智与情感——当代艺术十人展*, 上海张江当代艺术馆, 中国上海
- 2015 *十二级风——明雅集诗画艺术邀请展*, 明圆美术馆, 中国上海
- 倒叙的美术史中国当代艺术的另一种线索*, 亿利艺术馆, 中国北京
- 中国当代艺术家赴洛杉矶联展*, 洛杉矶艺术博览会, 美国洛杉矶
- 园林·异景——中国当代艺术邀请展*, 苏州金鸡湖美术馆, 中国苏州
- 2014 *自然之名——风景画与山水画邀请展*, 南京艺术学院美术馆, 中国南京
- 无形之形——国际当代艺术展*, 北京当代艺术馆, 中国北京



- 2013 时代肖像——当代艺术30年, 上海当代艺术博物馆, 中国上海  
 国风——中国油画语言研究展, 大都美术馆, 中国北京
- 2012 在当代——2012中国油画双年展, 中国美术馆, 中国北京  
 无形之形——中国当代艺术展, 卡尔舒特艺术中心, 德国  
 忆江南——中国当代艺术展, 中国上海  
 中国油画艺术展, 北京国子监油画艺术馆, 中国北京
- 2011 乡愁与相遇, 南京、杭州、成都、重庆艺术巡回展
- 2010 改造历史·2000~2009年的中国新艺术, 北京国家会议中心, 中国北京
- 2009 绘画的进行——中国表现主义画家八人展, 中国美术馆, 中国北京  
 社群——798双年展, 798艺术中心, 中国北京  
 叙事中国——成都双年展, 成都国际会展中心, 四川成都
- 2008 移域——上海美术双年展, 上海美术馆, 中国上海  
 中国新视像——来自上海美术馆藏中国当代艺术展, 拉斯佩齐亚现当代艺术中心, 意大利
- 2005 活的中国园林: 从幻想到现实, 德国德累斯顿  
 北京国际美术双年展, 中国美术馆, 中国北京  
 成都双年展, 成都现代艺术馆, 中国成都  
 大河上下——新时期中国油画回顾展, 中国美术馆, 中国北京

## 收藏

中国国家博物馆  
 中国美术馆  
 上海美术馆  
 大都美术馆  
 浙江美术馆  
 山东省美术馆  
 韩国阿拉里奥美术馆  
 上海世博会主题馆  
 上海张江当代艺术馆

## ARARIO GALLERY

### Jing Shijian

1960 Born in Liaoning, China.

Artist, now works as the professor of painting art academy of Chinese Academy of Fine Arts, Hangzhou, China.

### Solo Exhibitions

- 2023 *Kunstwollen*, Arario Gallery, Shanghai China
- 2023 *OUT. Jing Shijian*, Ningbo Museum of Art, Ningbo China
- 2022 *INFINTY*, POWERLONG Museum, Shanghai, China
- 2020 *Enigma Lake*, Guangda Art Museum, Hangzhou, China
- 2018 *The Snail's Universe and the Playful Landscape*", Arario Gallery, Shanghai, China
- Fable*, Shandong Art Museum, Shandong, China
- 2017 *1/2 Jing Shijian's Solo Exhibition*, Renke Art Gallery, Hangzhou, China
- 2014 *Domestication*, Dresden, Germany
- 2012 *"huai-su" the paper works Exhibition / ShangHai Art fair*, Shanghai, China
- 2009 *Rowing a Boat: The Art of Jing Shijian*, ZhangJiang-Art Center, Shanghai, China
- The possibility of reading: Frozen 2009 seconds*, Action Art, Hangzhou, China
- 2008 *The possibility of reading: Frozen 2008 seconds*, Action Art, Beijing, China
- 2006 *Geography of Art: Jing ShiJian Sole Exhibition*, National Museum of Fine Arts, Beijing, China
- Roaming In The World: Jing ShiJian Sole Exhibition*, Shanghai Art Museum, Shanghai, China

### Selected Group Exhibitions

- 2020 *The First Jinan International Biennale*, Shandong Art Museum, Shandong, China
- 2019 *West Lake*, EIGEN+ART Gallery, Leipzig/Berlin, Germany
- Romantic Irony*, ARARIO GALLERY, Seoul, Korea
- 2018 *Mind Temple*, MoCA Shanghai, Shanghai, China
- The Frontier of Chinese Art Education*, San Francisco, USA
- 2016 *Sense and Sensibility: Ten Artists' Exhibition for Contemporary Art*, Zhangjiang Contemporary Art Museum, Shanghai, China
- 2015 *Force 12 Hurricane: Ming Distinguished Assembly*, Mingyuan Art Museum Shanghai, China
- Exhibition of Chinese Contemporary Art LOS ANGELES ART SHOW*, Los Angeles, USA
- Garden Splendors: Chinese Contemporary Art Inuitational Exhibition*, Jinji Lake Art Museum, Suzhou, China

## ARARIO GALLERY

- 2014 *In the Name of Nature: An Exhibition on Landscape Painting*, Art Museum of Nanjing Art University, Nanjing, China  
*Incorporeal Shape: International Cortemporary Art Exhibition*, Museum of contemporary art Beijing , Beijing, China
- 2012 *In time: 2012 China oil painting Biennial*, National Museum of Fine Arts, Beijing, China  
*Incorporeal Shape: Chinese Contemporary Art Collection*, Kunstwerk Carlshütte, Büdelsdorf, Germany  
*Dreaming of the South: Chinese Contemporary Art Collection*, Fanhua Art Exhibition Center, Shanghai, China  
2012 China Oil Painting Art Exhibition, Olympia West Hall, London, UK
- 2010 Reshaping History: 2000-2009 Chinese News Art, The National Conference Center, Beijing, China
- 2009 *China Narratives: Chengdu Biennial, Chengdu International Exhibition Center*, Chengdu, China  
*Constellations: 798 Biennial, 798*, Beijing, China
- 2008 *Live classical Chinese garden-From fantasy to reality*, Dresden, Germany
- 2005 *Beijing International Biennial*, China National Museum of Fine Arts, Beijing, China  
*Chengdu Biennial*, Chengdu Modern Art Museum, Chengdu, China

## SELECTED COLLECTIONS

National Museum of China  
National Art Museum of China  
China Arts Museum·Shanghai  
Dadu Museum of Art  
Zhejiang Art Museum  
Shandong Art Museum  
Arario Museum  
EXPO 2010  
Z-art Center

# ARARIO GALLERY



阿拉里奥画廊上海  
上海市徐汇区龙爱路7号芒果广场D栋一层

Arario Gallery Shanghai  
7 Longai Rd, Mangoo Hub, #D, 1F, Xuhui District, Shanghai

Email: [info@araioshanghai.com](mailto:info@araioshanghai.com)

Web: [www.arariogallery.com](http://www.arariogallery.com)